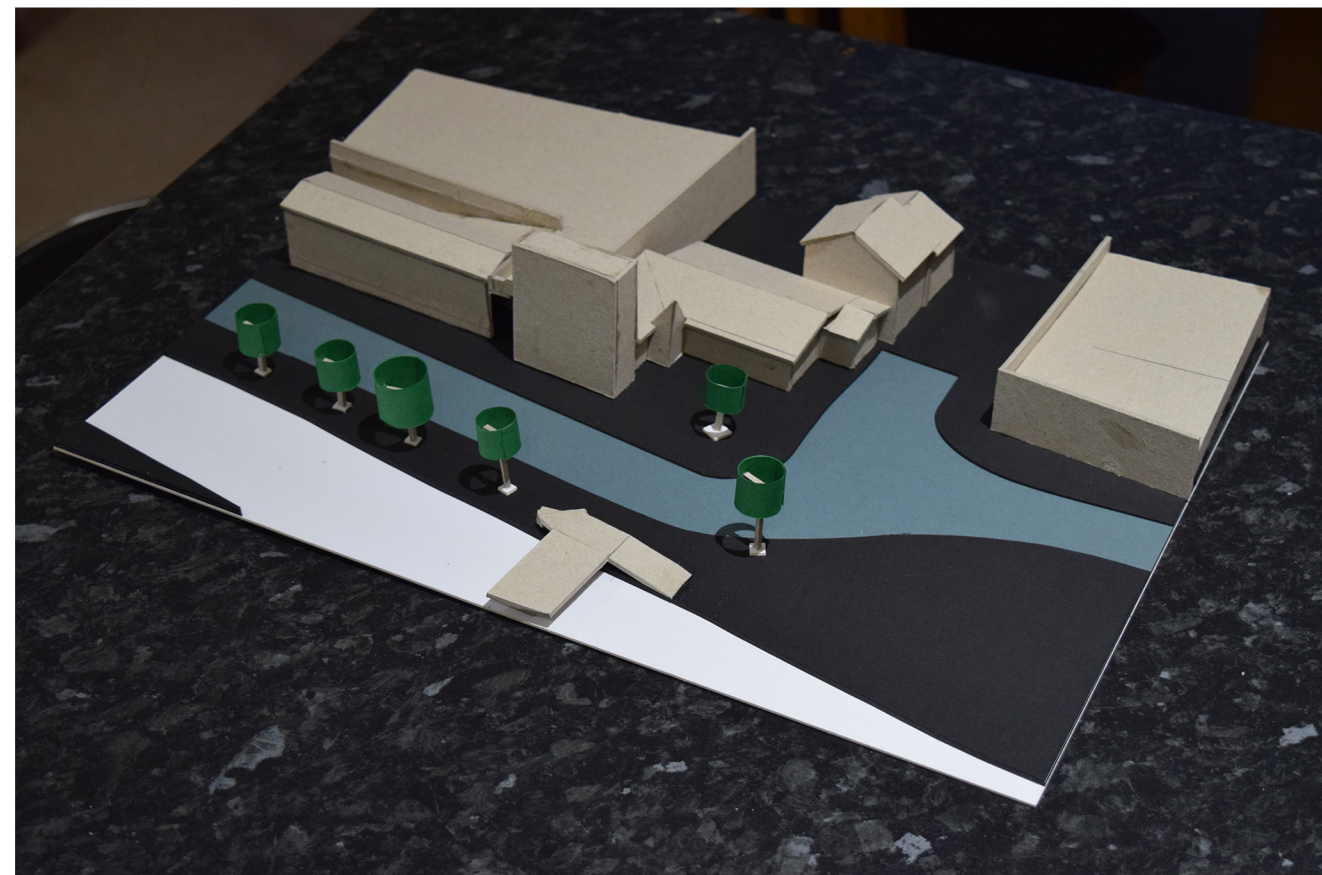
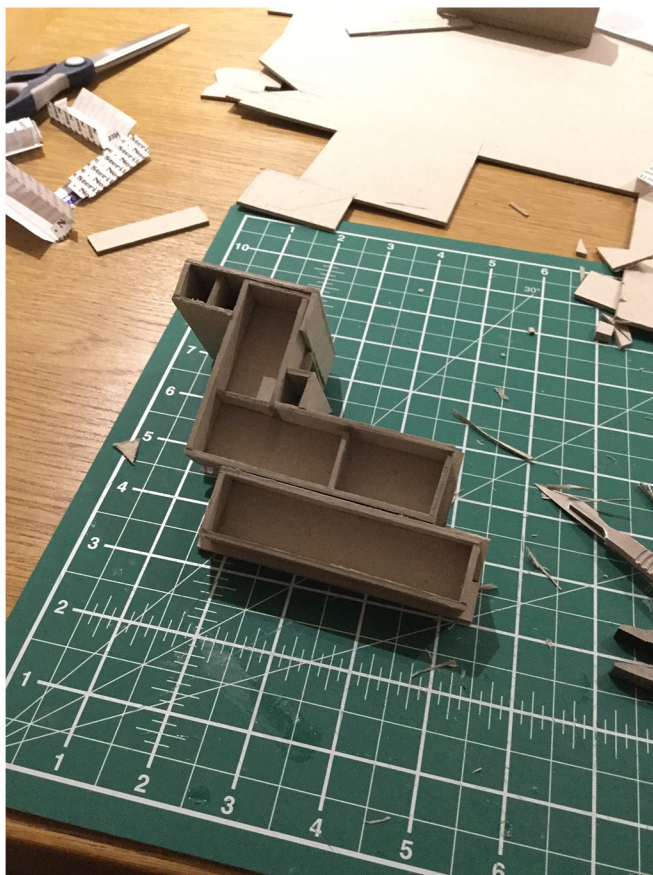
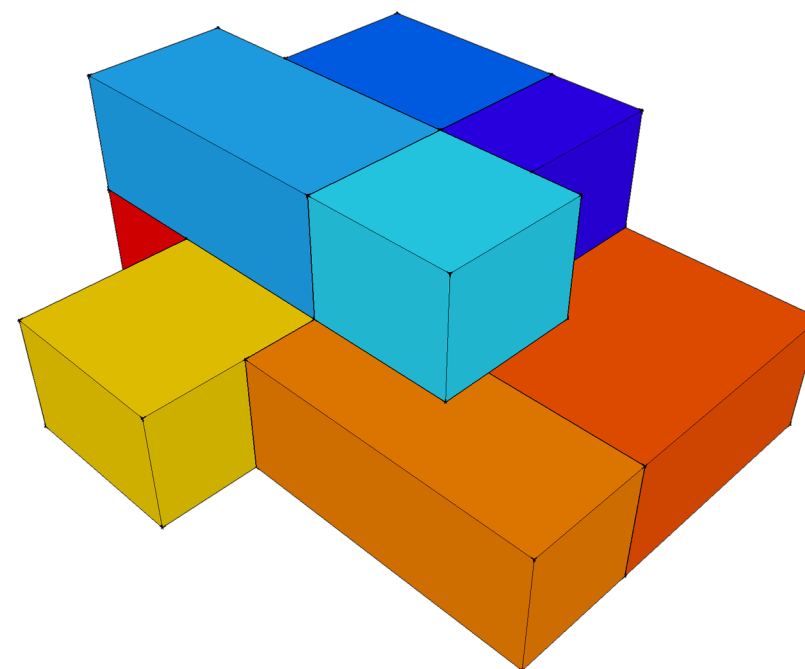
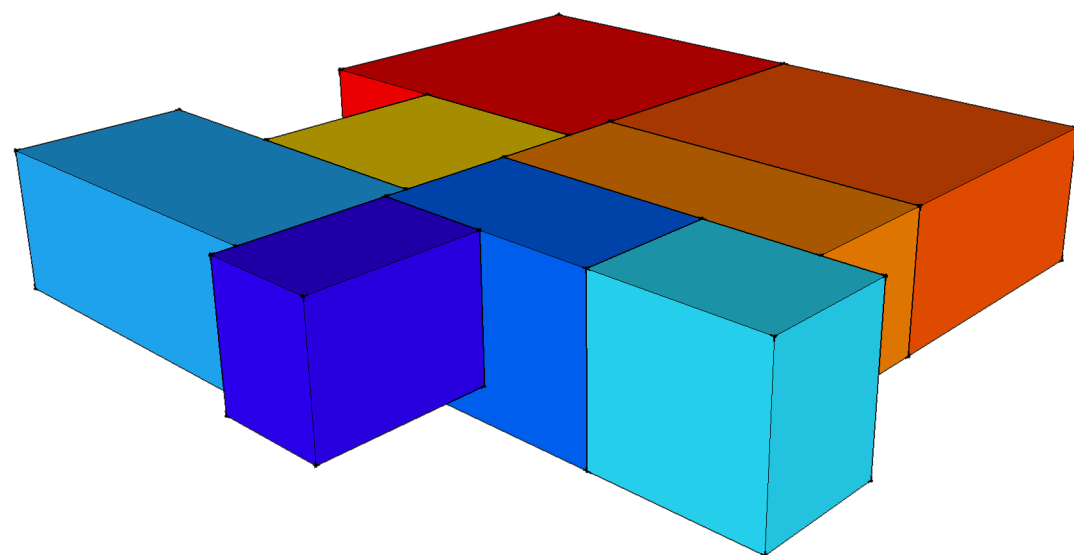
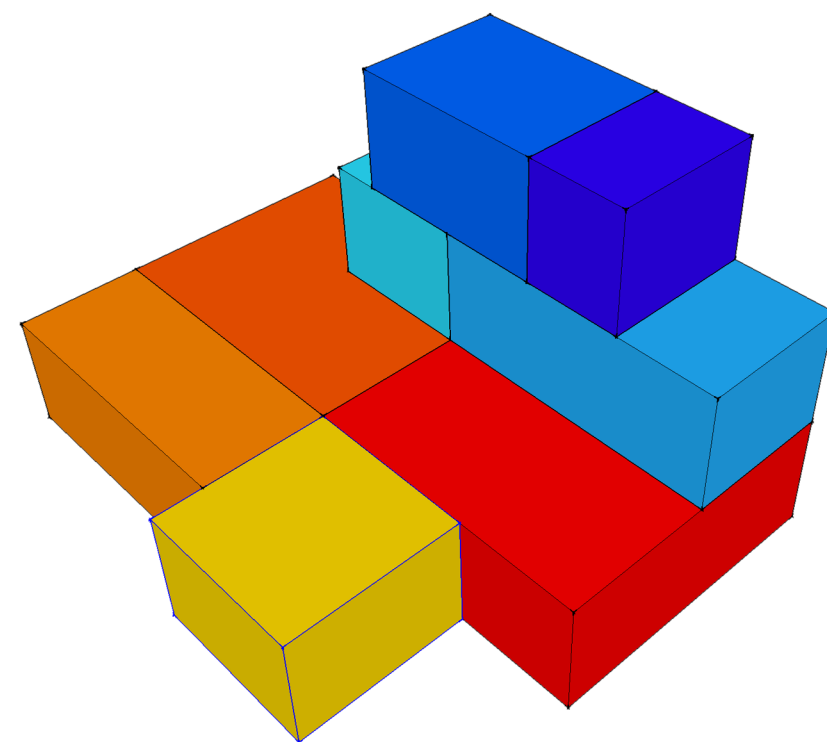
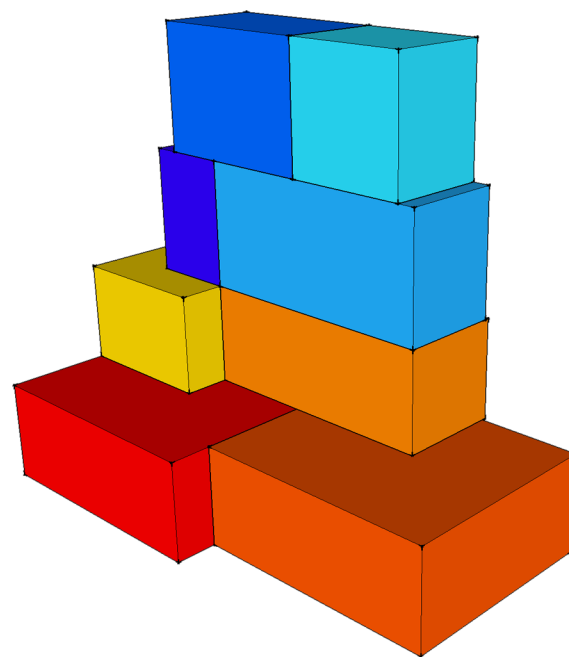
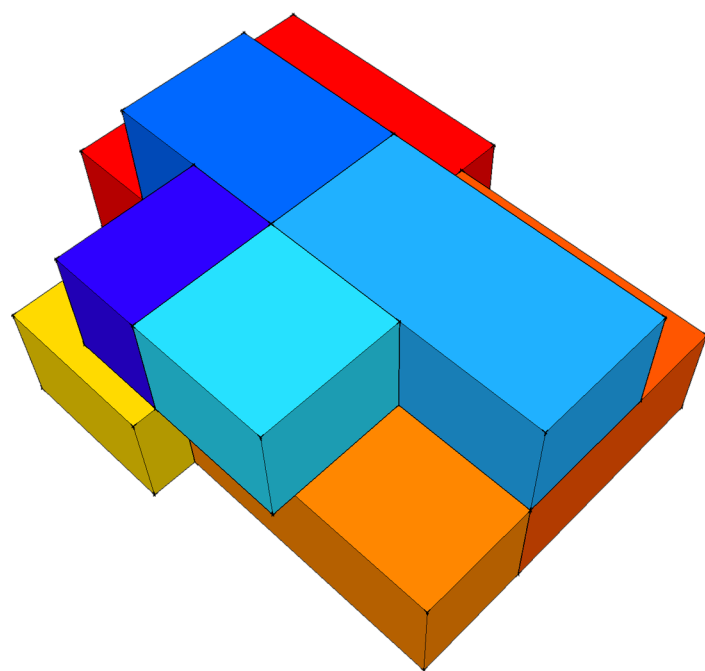


Card Model Making Pictures







# Individual Room Massing

<span style="color: red;">■</span> Meat Storage	<span style="color: orange;">■</span> Meat Prep	<span style="color: brown;">■</span> Retail Space	<span style="color: yellow;">■</span> Sub Meat Prep
<span style="color: blue;">■</span> Kitchen/Diner	<span style="color: cyan;">■</span> Living Area	<span style="color: darkblue;">■</span> Bedroom	<span style="color: lightblue;">■</span> Bathroom

Massing for a 2 Person house atop a small, approximately 3-4 staff Butchers shop. The Commercial requirements are much larger than the residential requirements. These elements can be placed in a basement to reduce square footage on the ground.





Delivery

REQs:  
Meat Hangers  
Easy Access  
Refrigerated

Meat Storage (36 Sq M)



Meat Prep (30 Sq M)



REQs  
Meat Grinder  
Band Saw  
Sausage Maker  
Large Chopping Surfaces  
Easy to Clean  
Linear workflow

Sold to Customer

REQs:  
Small Chopping Area  
Countertop Space  
Hand Sink



Sub Meat Prep



Retail Floor

REQs:  
Maximum Display Space  
POS



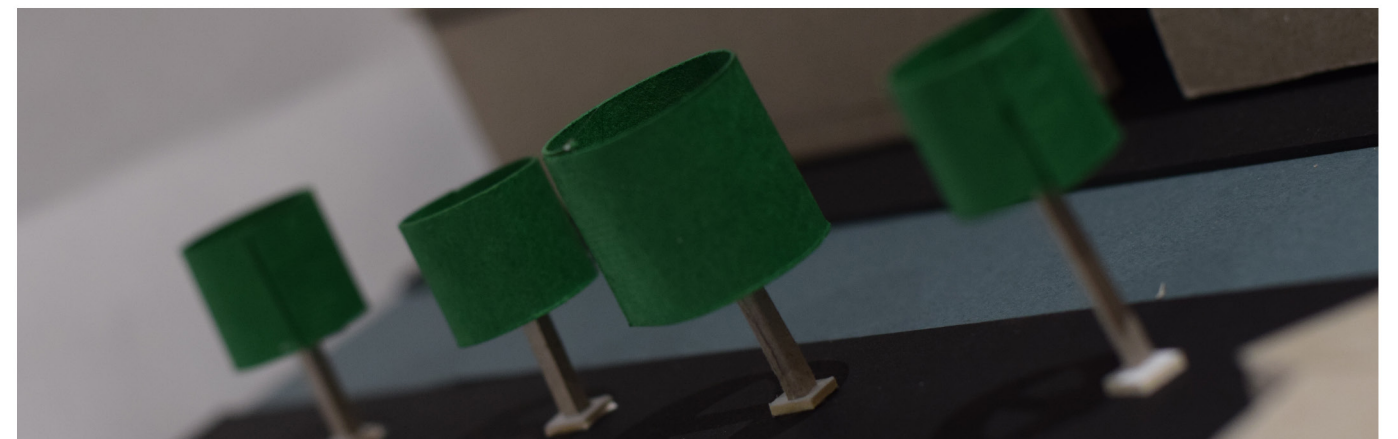
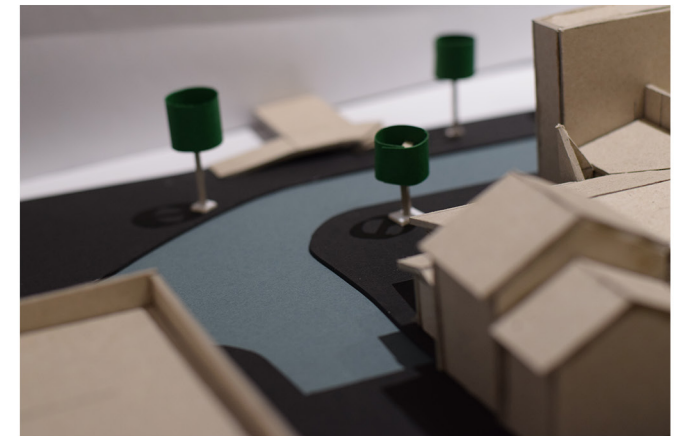
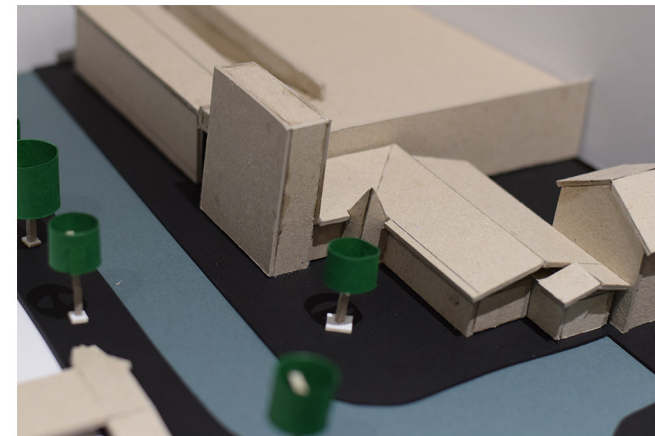
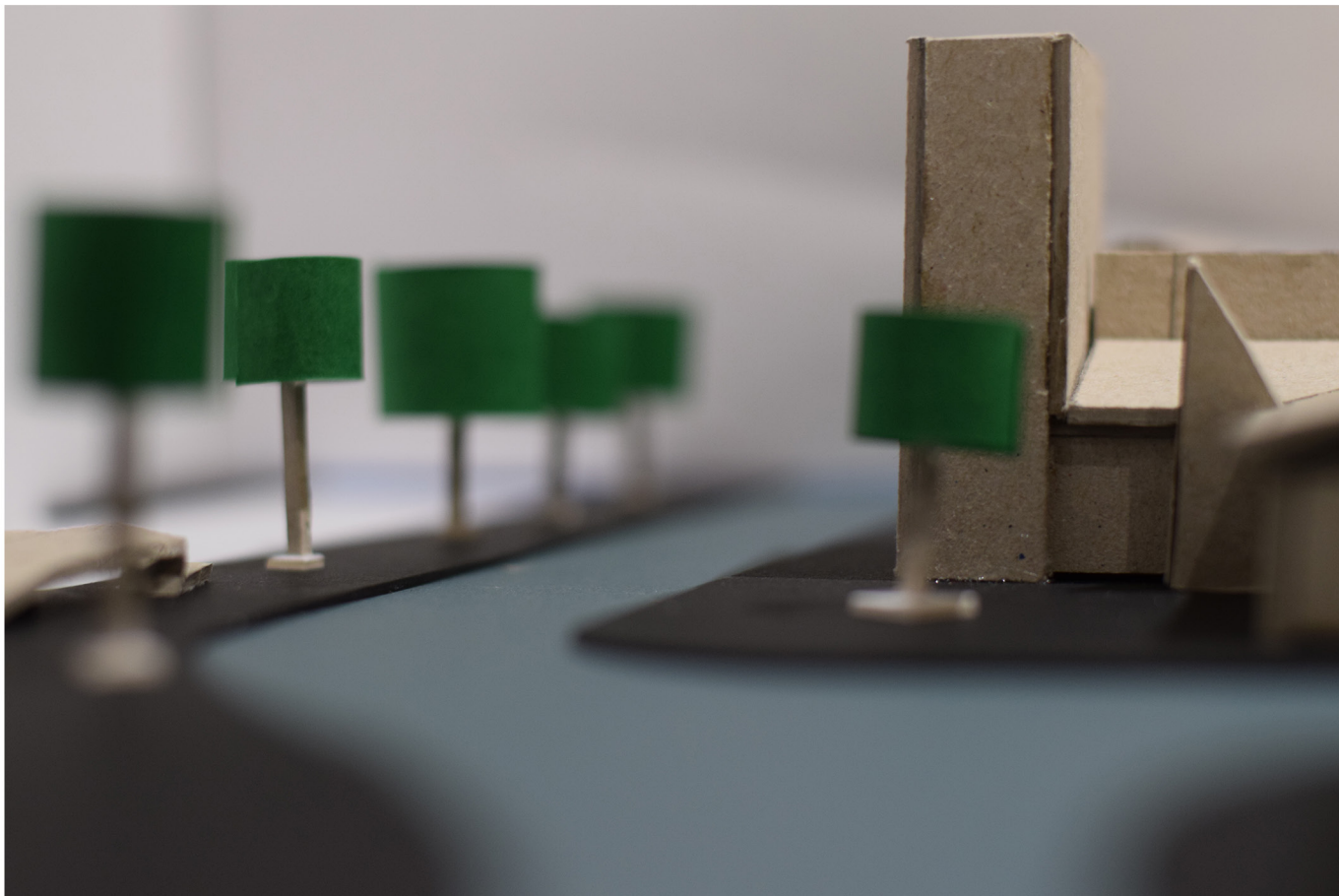
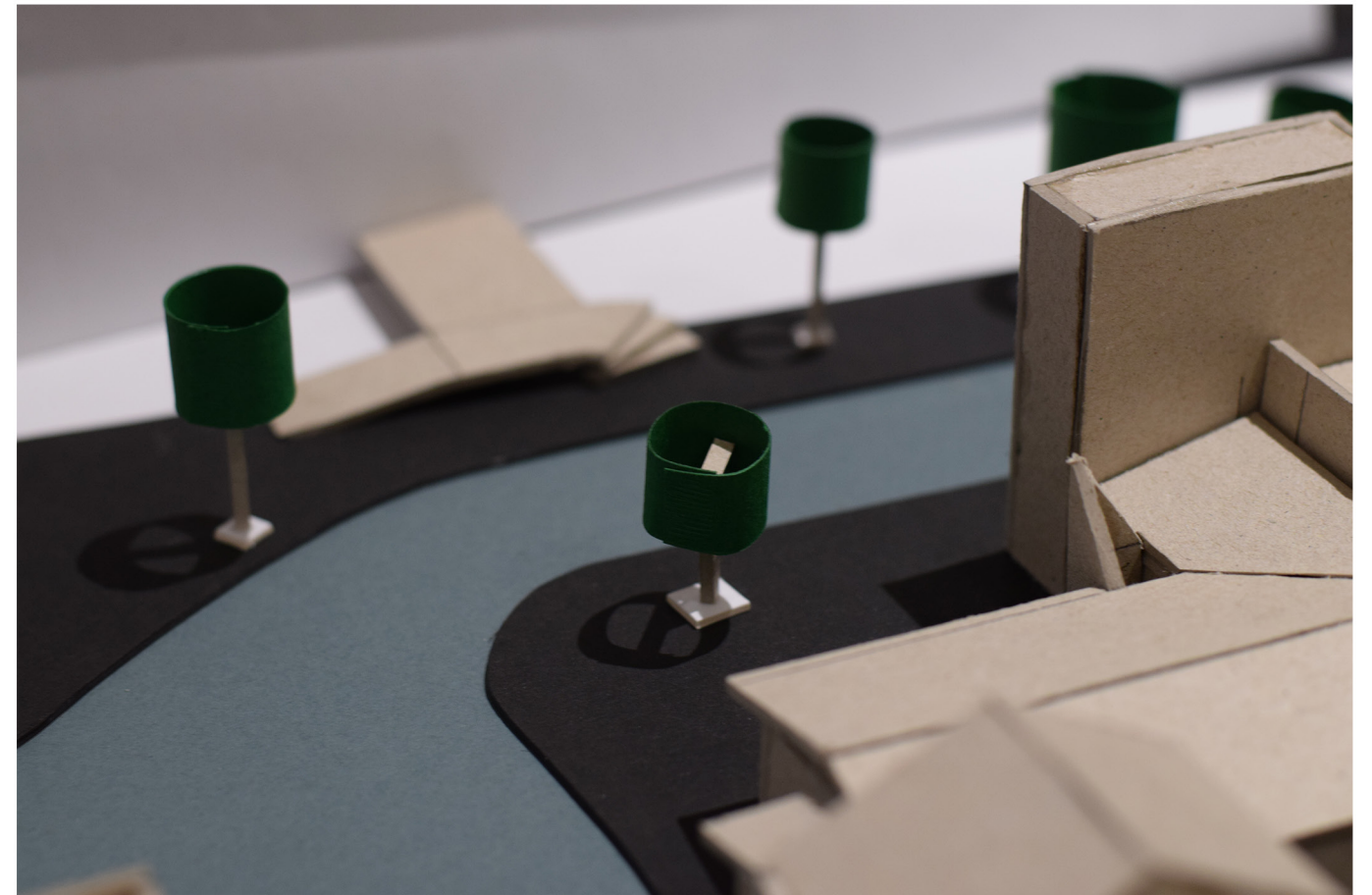
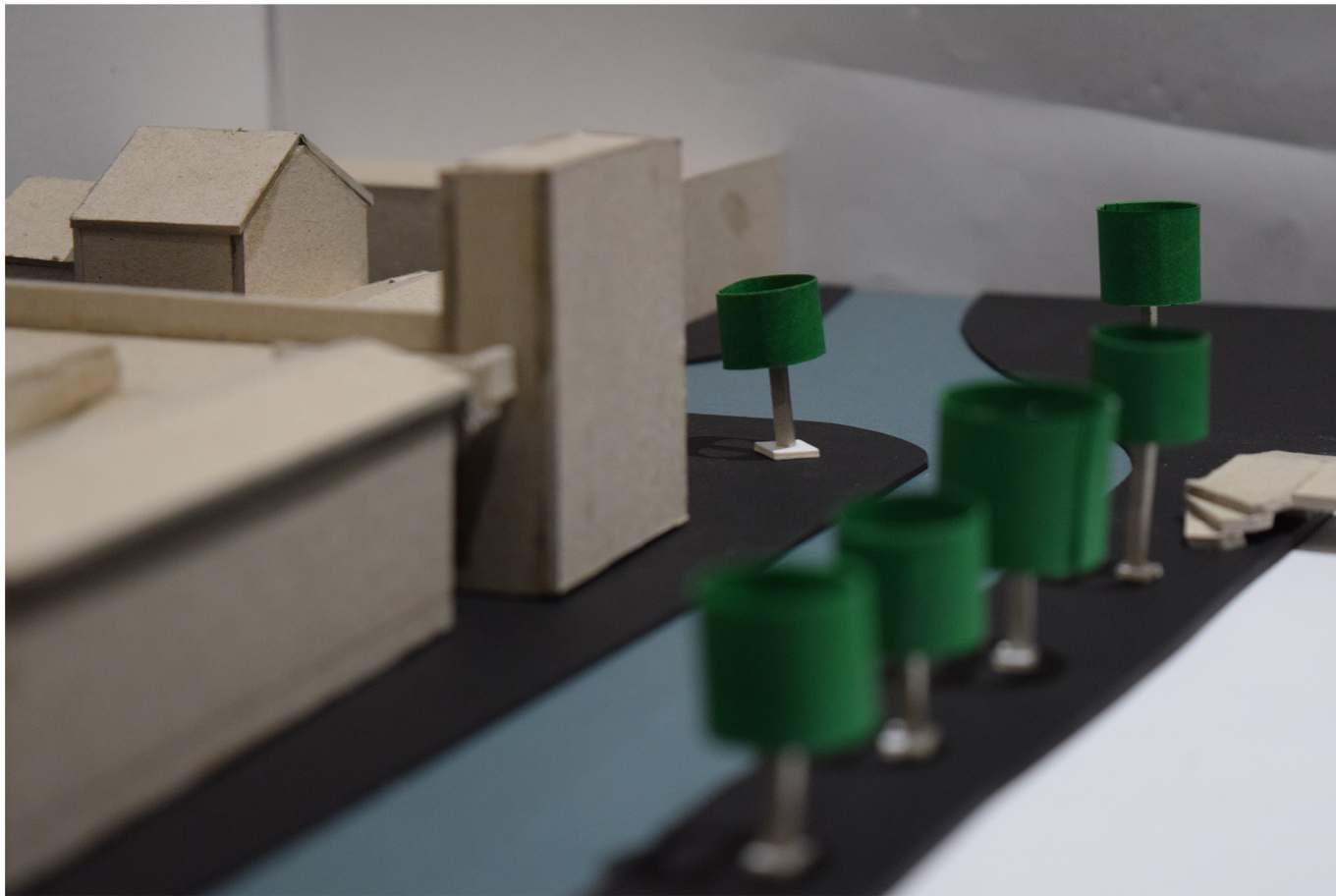


#### Site Views & Images

The Site is situated to the east of the main High street, past the Lincoln marketplace and across the river from the Waterside Shopping Centre. The site has pedestrian access from all sides and vehicular access from the west.







1:500 Site Model: Close up Photos





1:50 Scale Site Section [North Elevation]



1:50 Scale Site Section [West Elevation]





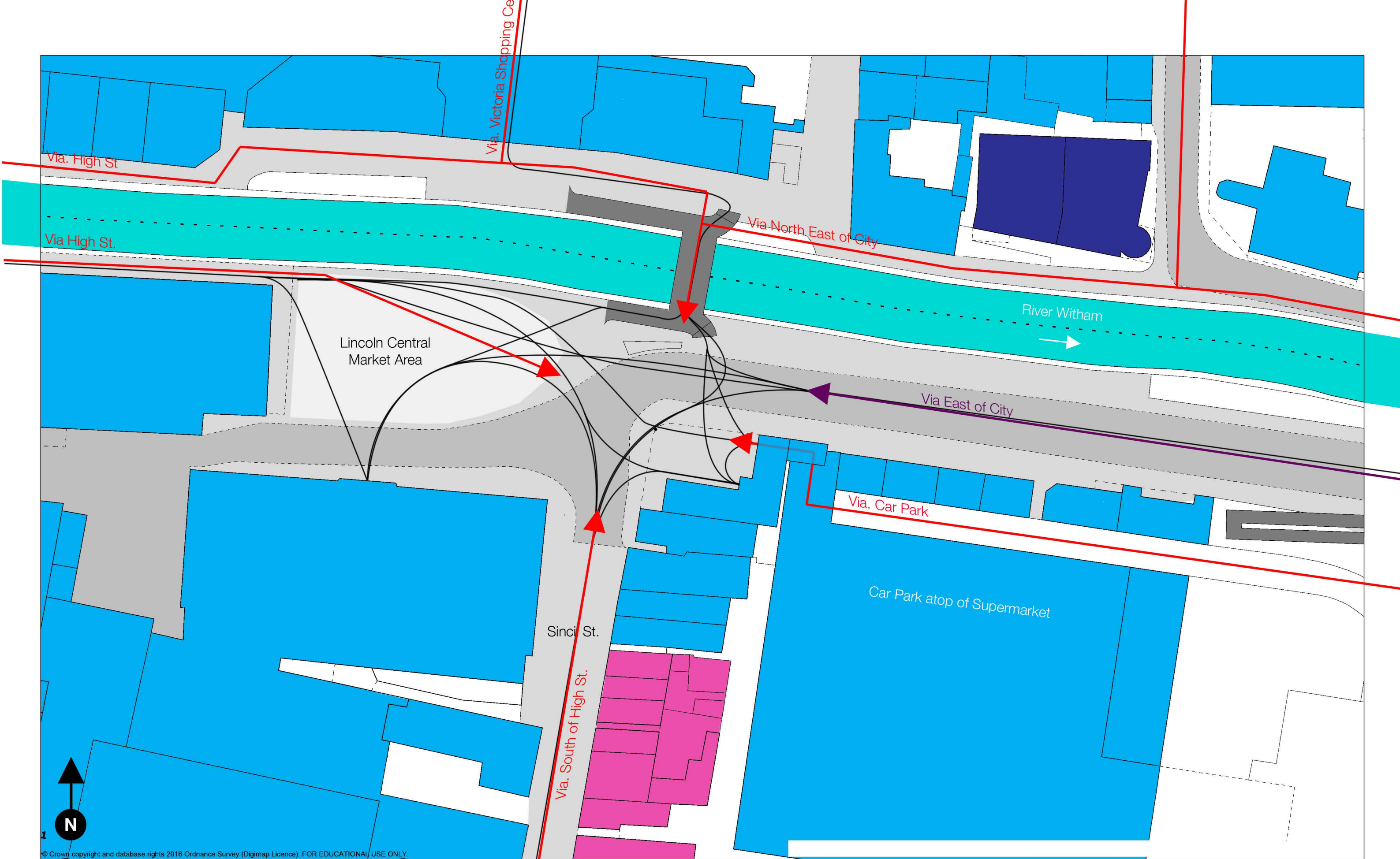




















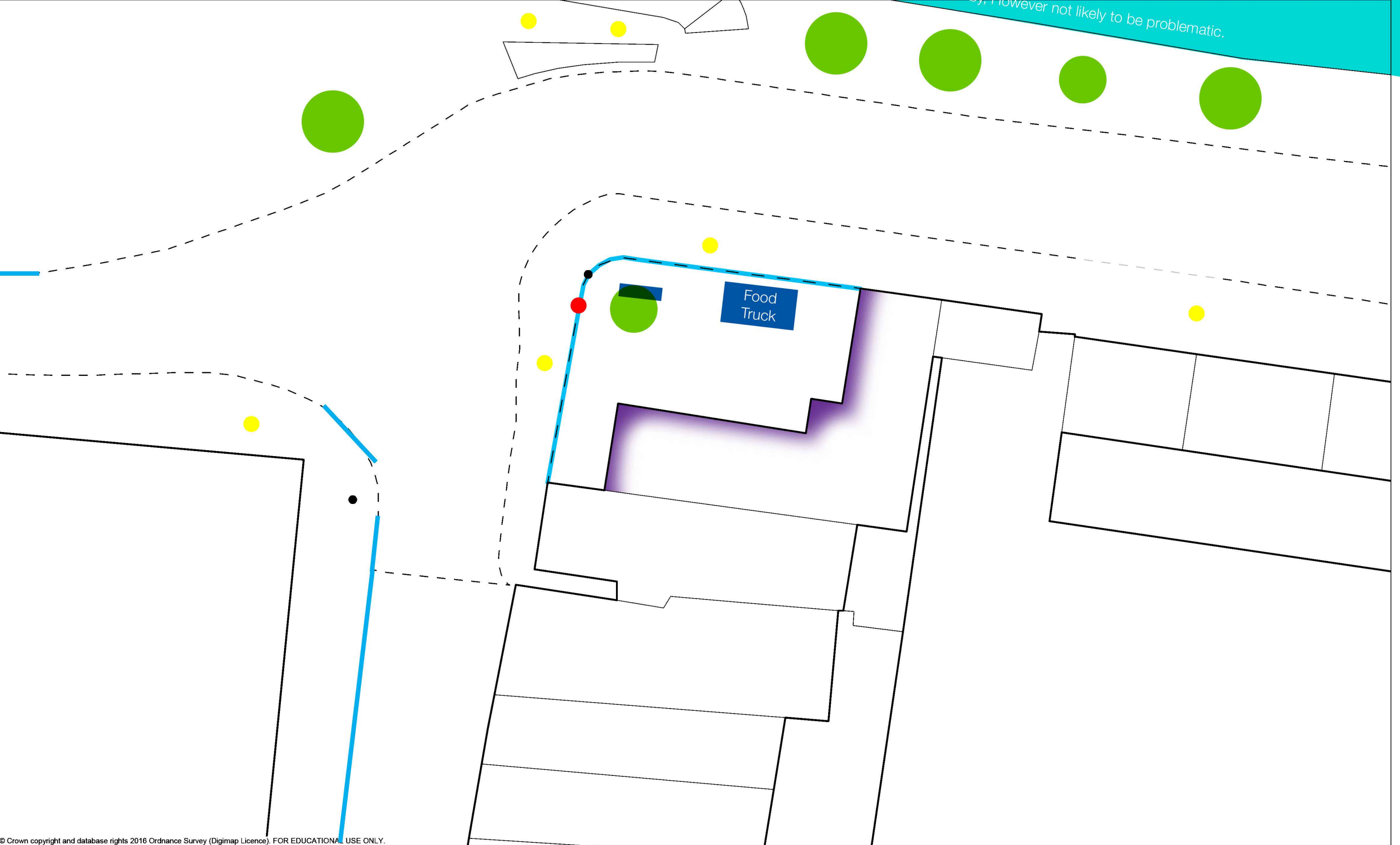


© Crown copyright and database rights 2016 Ordnance Survey (Digimap Licence). FOR EDUCATIONAL USE ONLY.

- |   |   |  |   |
|---|---|--|---|
|  Commercial             |  Residential               |  Residential + Commercial |  Other |
|  River                  |  Road                      |  Footpath                 |   |
|  Pedestrian Site Access |  Ped/Vehicular Site Access |  Pedestrian Circulation   |   |

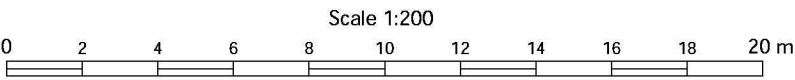
Land use surrounding the site with Site access & circulation overlay  
General land use around the area is commercial. There is a single residential property and a street of mixed use properties in the immediate area around the site.





© Crown copyright and database rights 2016 Ordnance Survey (Digimap Licence). FOR EDUCATIONAL USE ONLY.

- Shop Entrances
- Post Box
- Lamp Post
- Bollards
- Tree
- Fresh Water



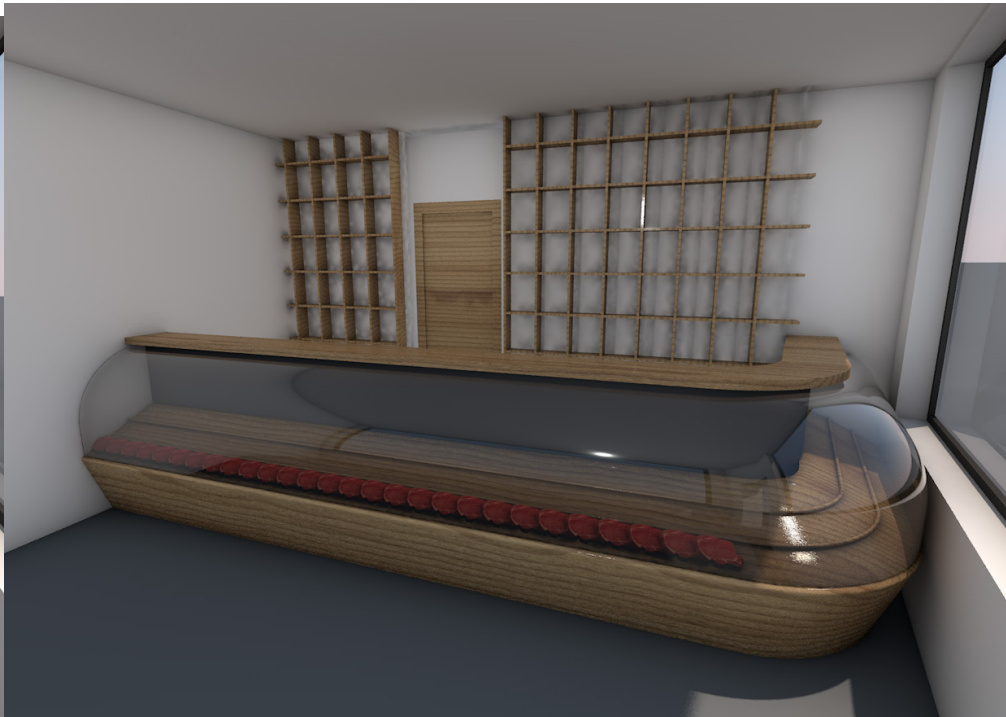
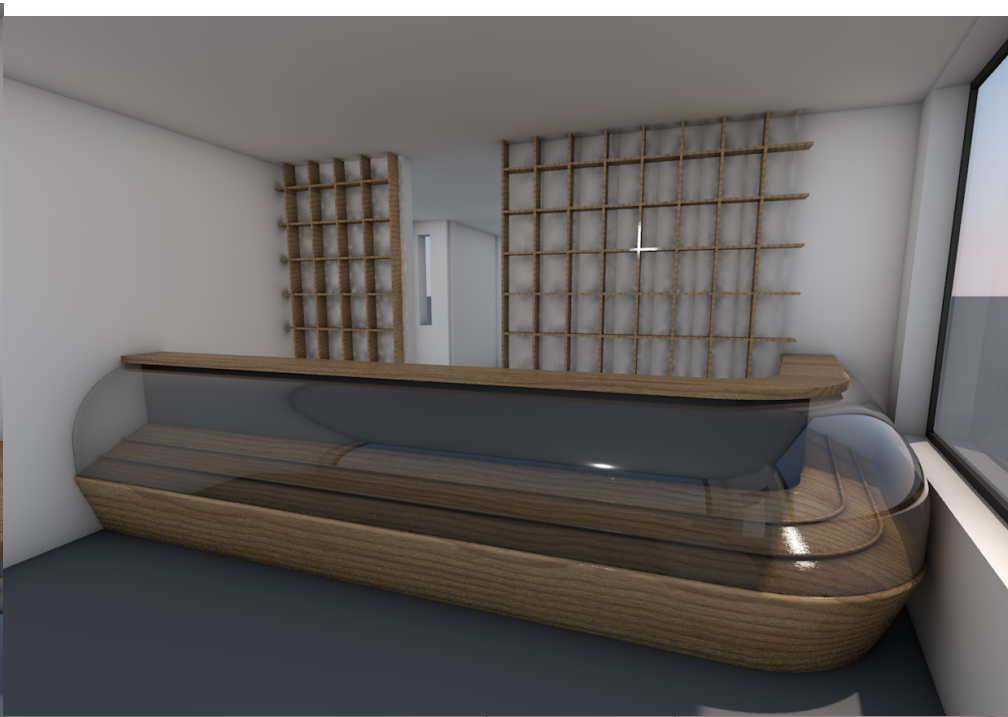
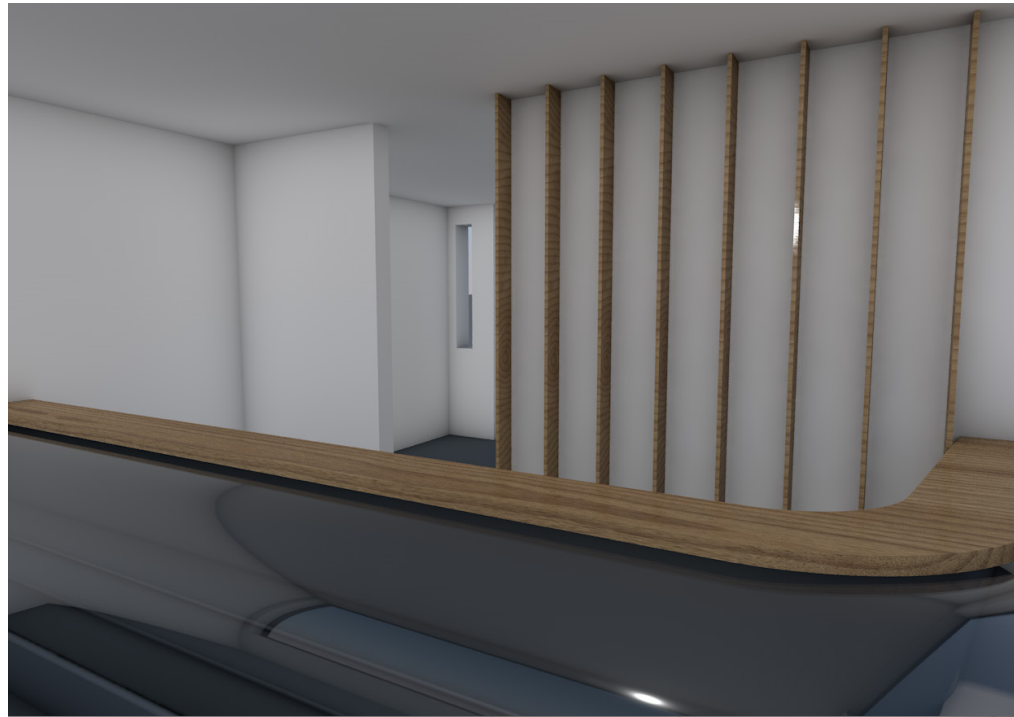
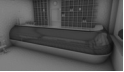
Natural Features Surrounding the Site  
General land use around the area is commercial. There is a single residential property and a street of mixed use properties in the immediate area around the site.



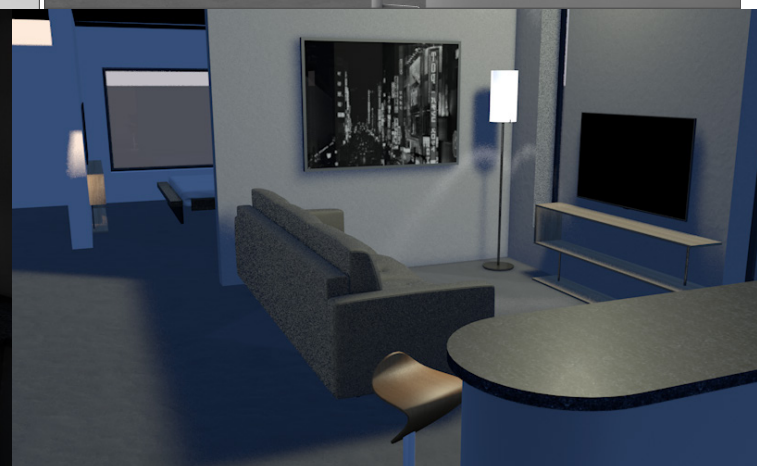
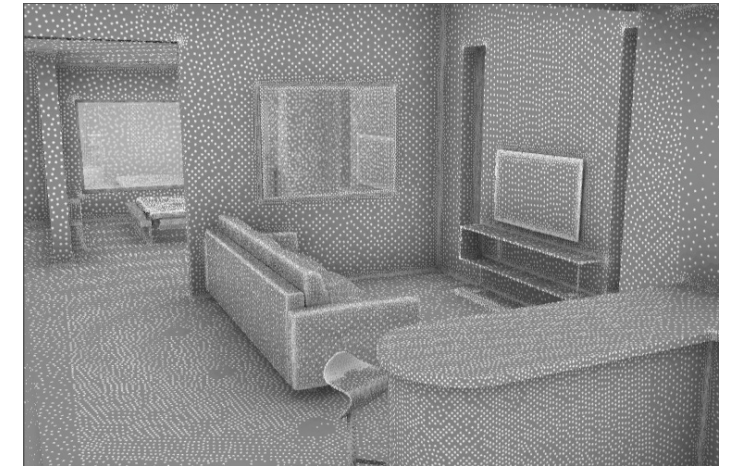
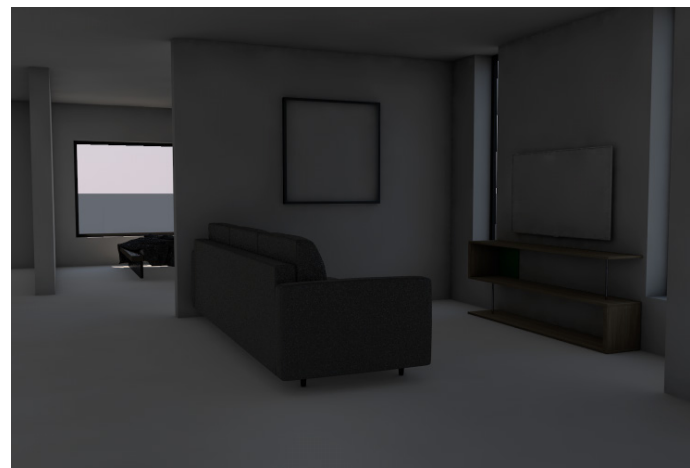
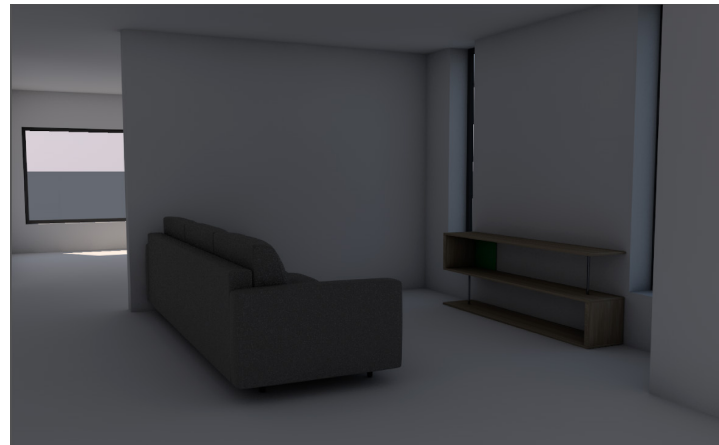








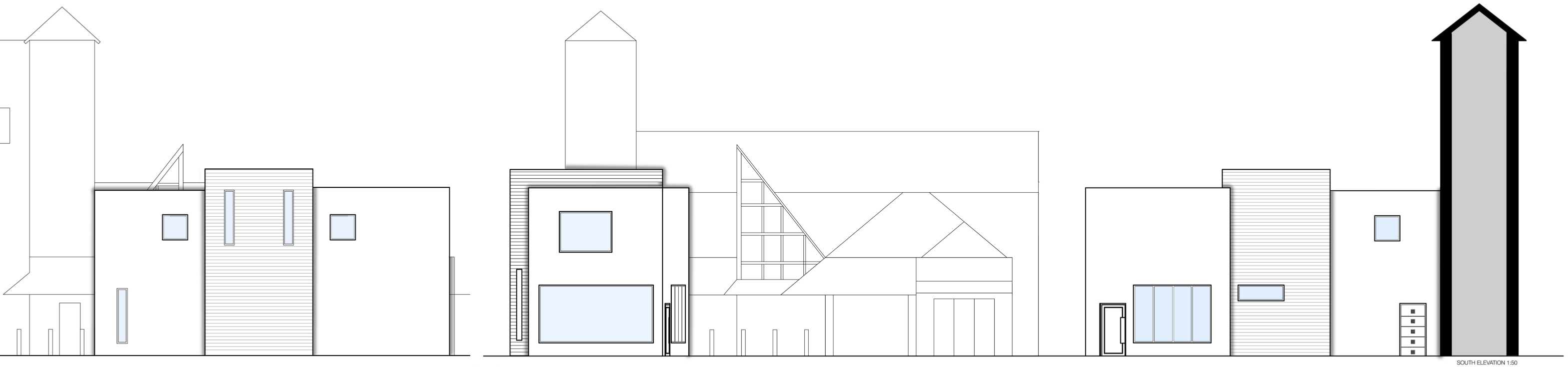






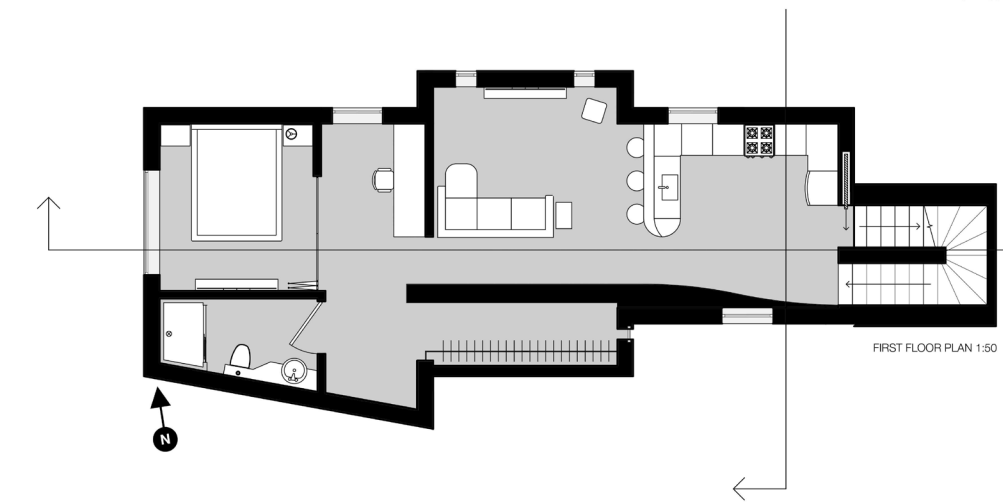




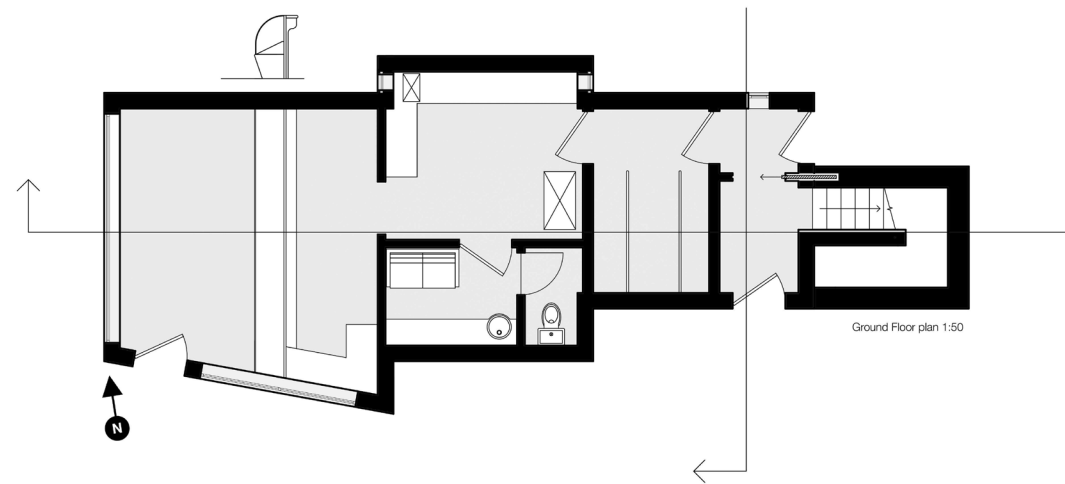


SECTION 1:50

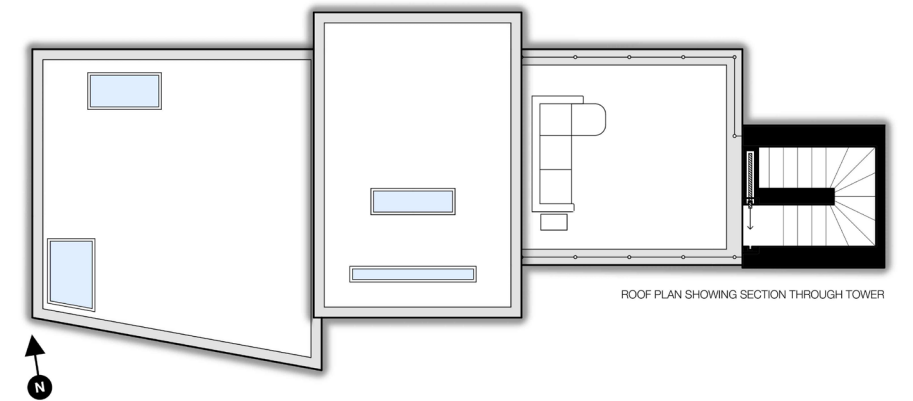
SOUTH ELEVATION 1:50



FIRST FLOOR PLAN 1:50



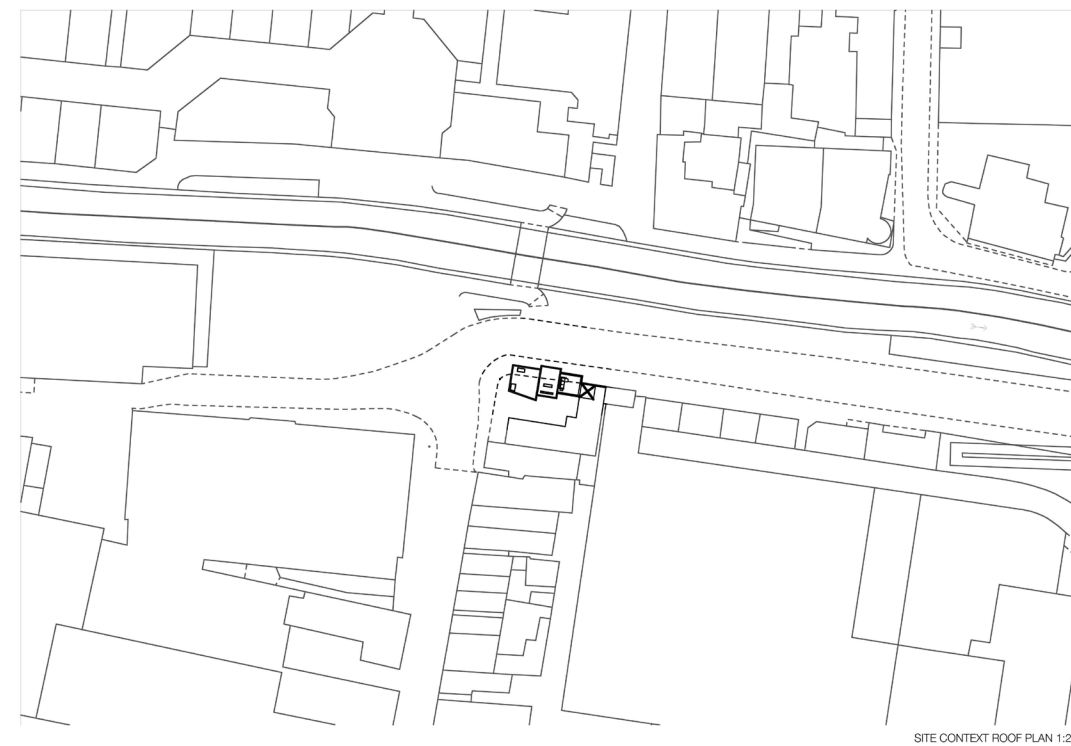
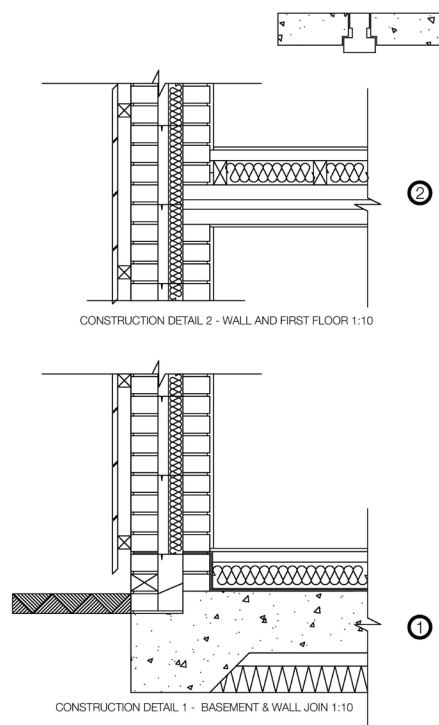
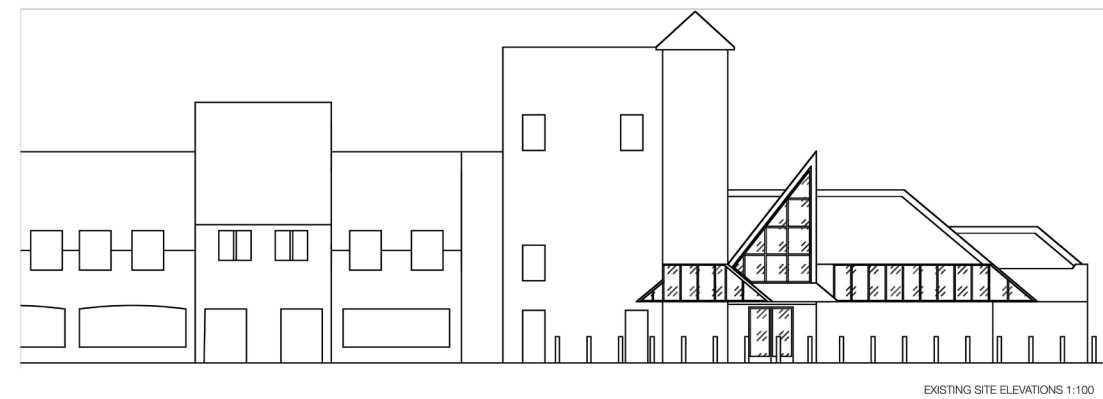
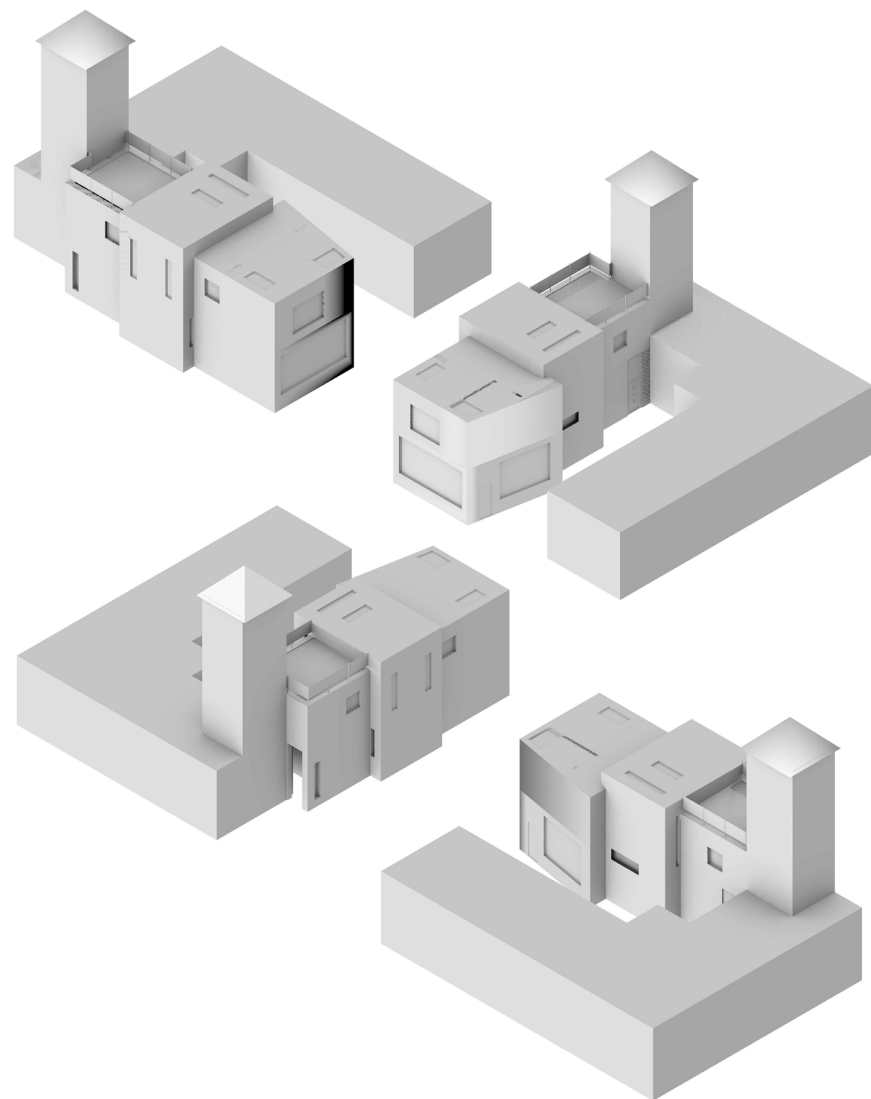
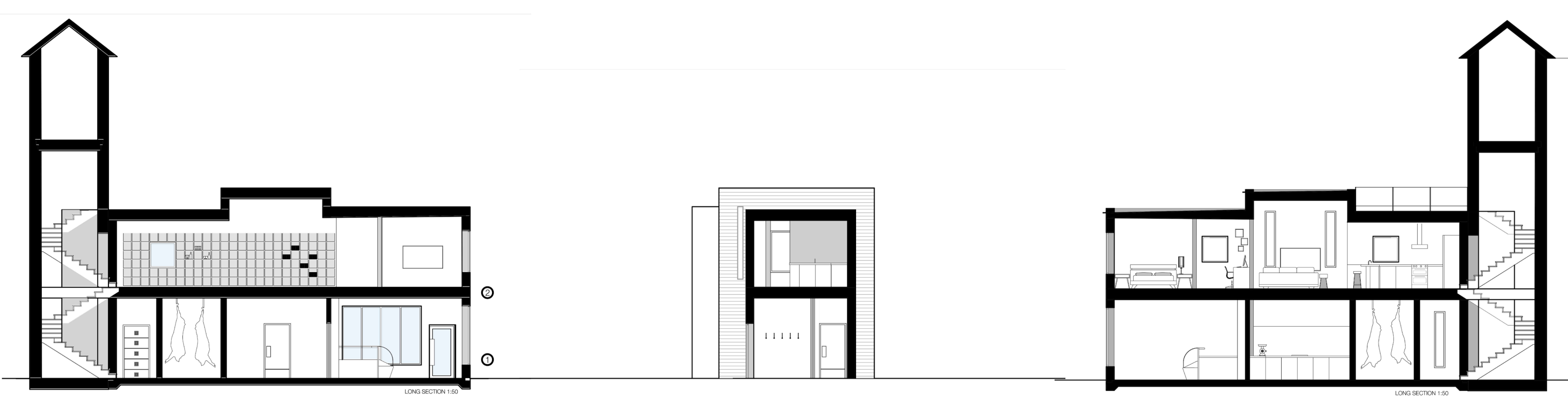
Ground Floor plan 1:50



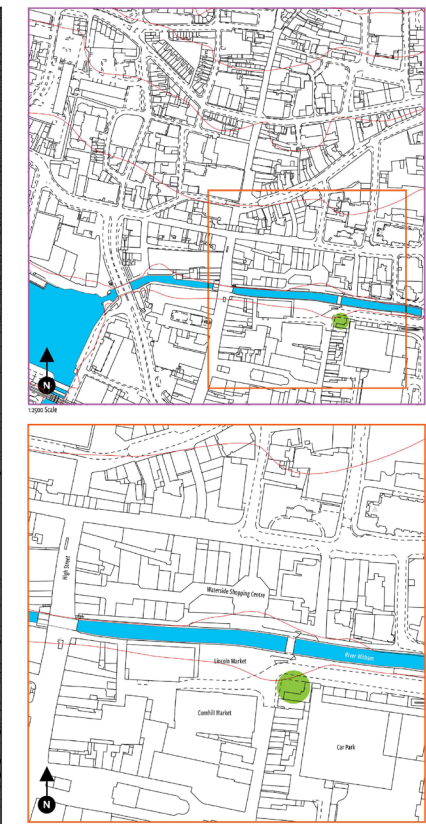
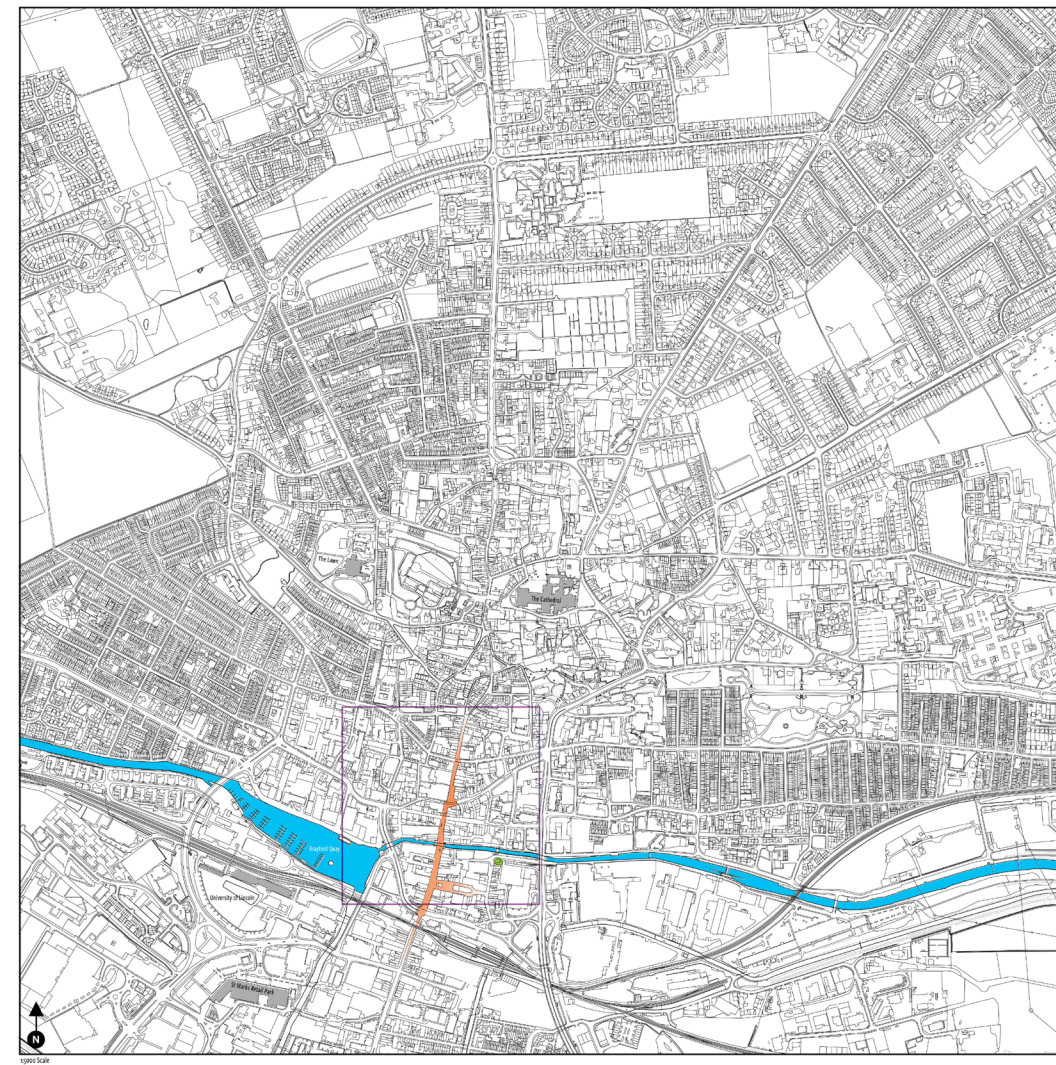
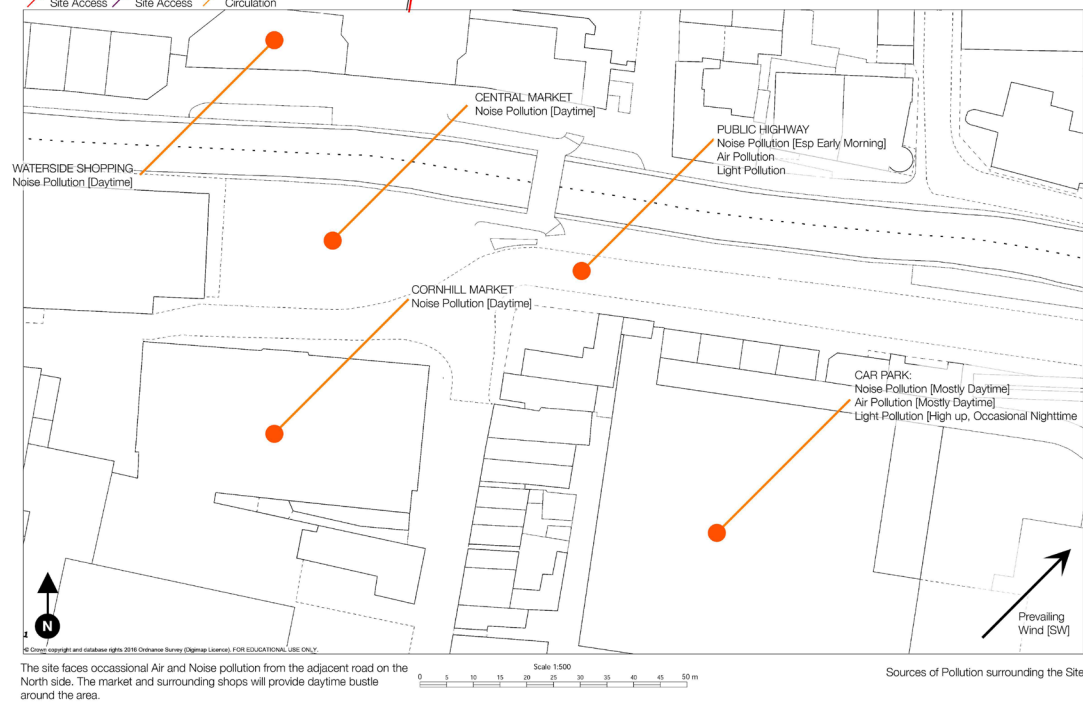
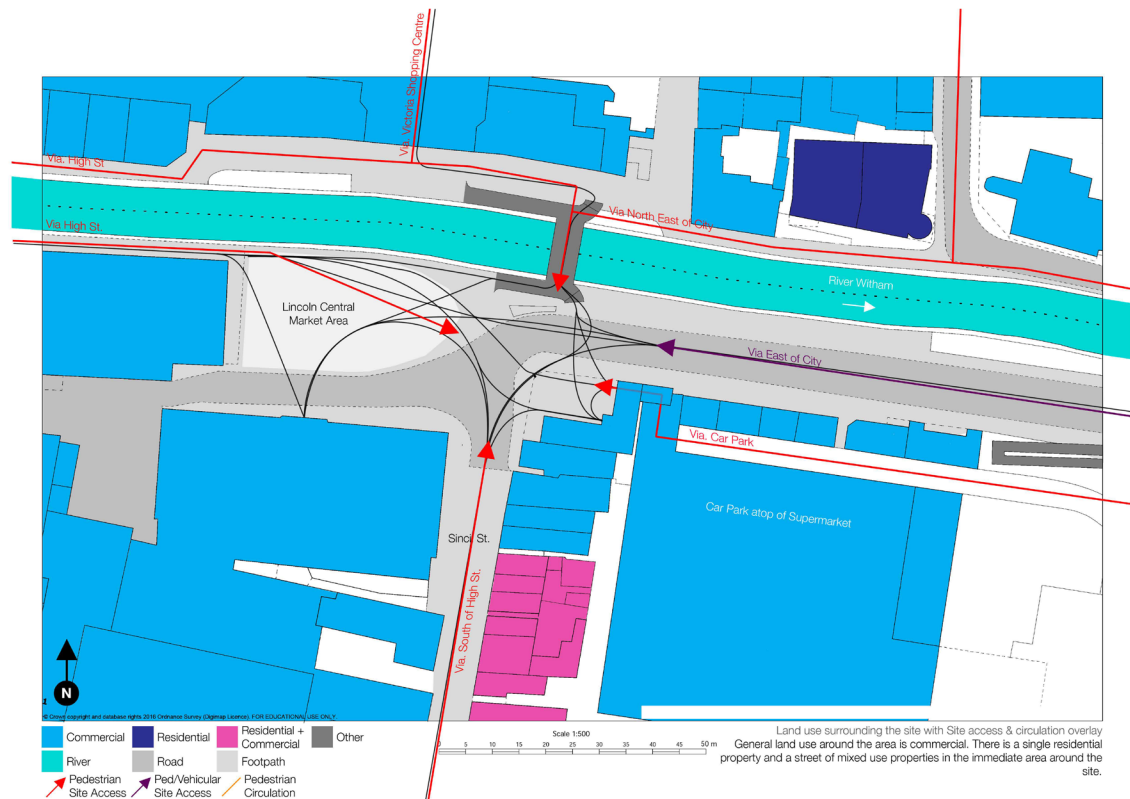
ROOF PLAN SHOWING SECTION THROUGH TOWER



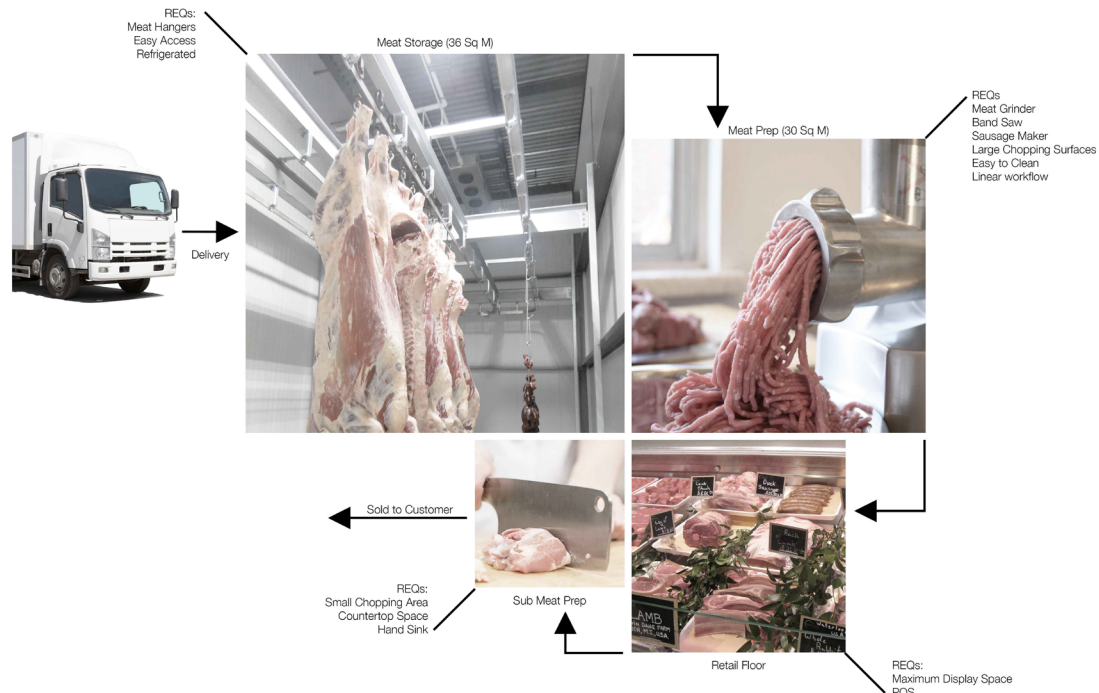








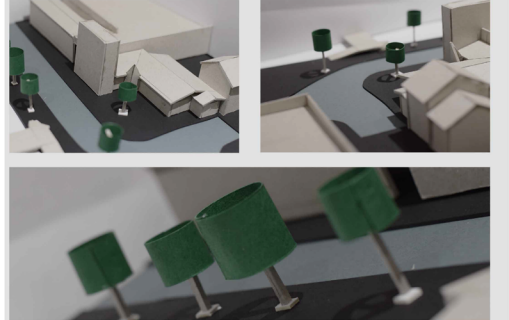
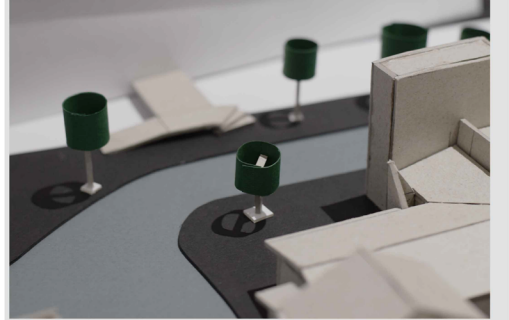
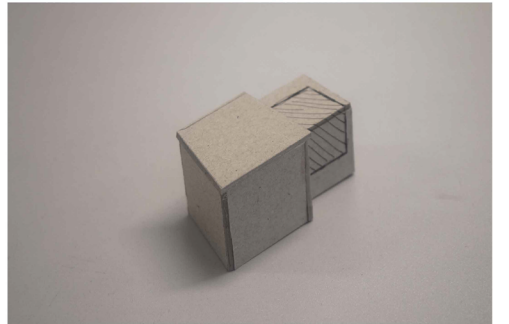
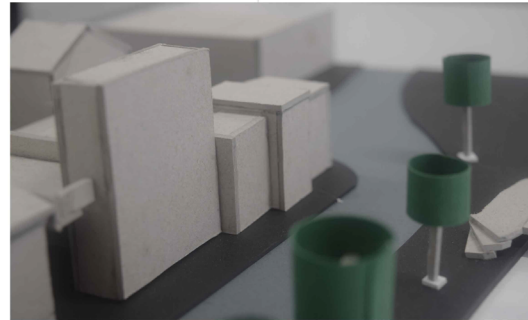
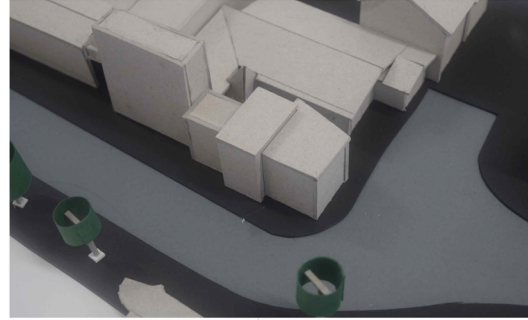
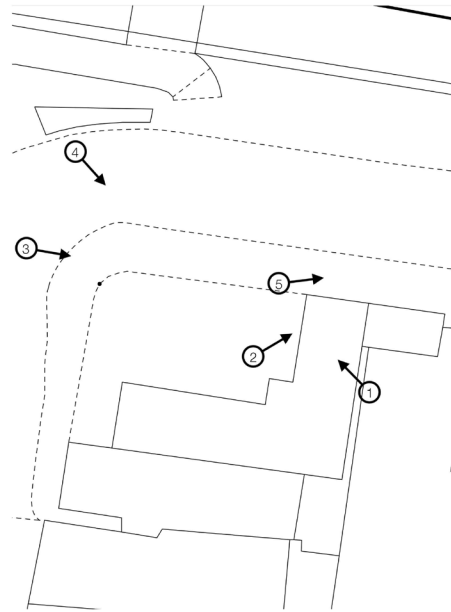




- Individual Room Massing
- Meat Storage
  - Meat Prep
  - Retail Space
  - Sub Meat Prep
  - Kitchen/Diner
  - Living Area
  - Bedroom
  - Bathroom

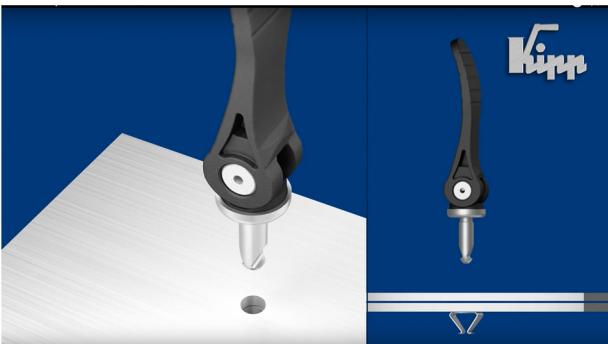
Butchers Shop room sizes & requirements

Massing for a 2 Person house atop a small, approximately 3-4 staff Butchers shop. The Commercial requirements are much larger than the residential requirements. These elements can be placed in a basement to reduce square footage on the ground.



1:500 Site Model: Close up Photos

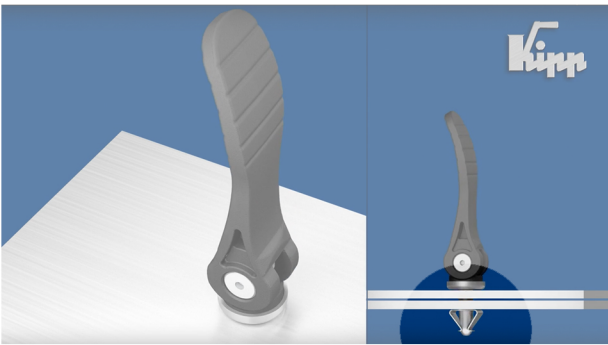




1  
CAM LEVER AND  
JOINING PARTS  
ALL SEPARATED.



2  
LOWER CAM  
LEVER INTO PLACE



3  
PUSH DOWN TO  
LOCK THE LEVER  
IN PLACE



4  
PUSH LEVER  
TOWARDS  
LATERAL  
POSITION.



5  
THE LEVER WILL  
CLAMP THE PARTS  
TOGETHER AS IT  
MOVES FURTHER  
TOWARDS THE  
LOCKING POINT



6  
CAM LEVER WILL  
LOCK INTO PLACE  
WHEN LATERAL,  
LOCKING THE  
PARTS IN PLACE

CAM Lever illustration PHASE 1: INSTERTION

7  
LIFT THE LEVER  
FROM THE  
LATERAL  
POSITION.

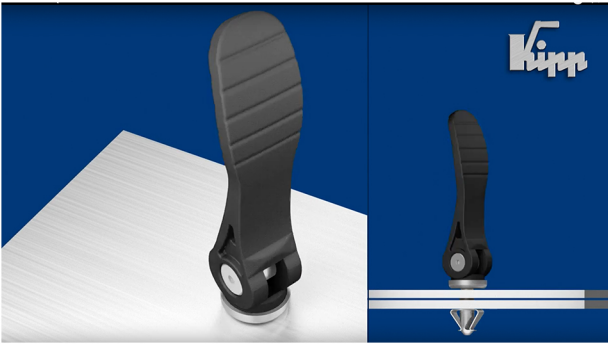
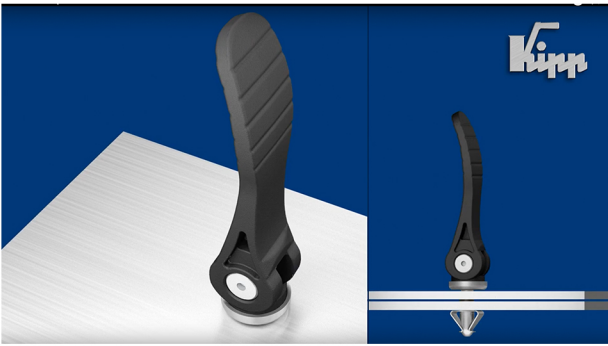
8  
FLIP THE LEVER UP,  
THIS WILL SLOWLY  
START TO UNLOCK  
THE COMPONENTS

9  
AS THE LEVER  
REACHES  
VERTICAL, THERE  
WILL BE A SMALL  
AMOUNT OF  
RESISTANCE

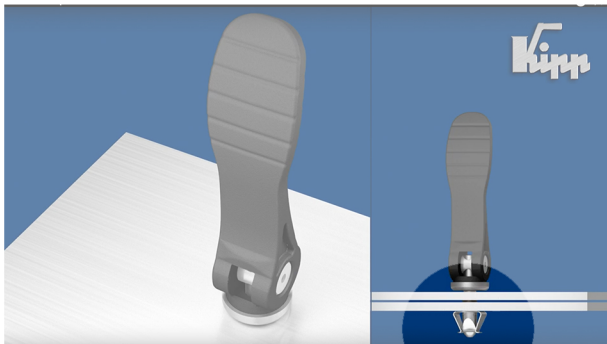
5  
THE LEVER IS NOW  
VERTICAL. THE  
COMPONENTS  
WILL NOW BE  
LOOSE.

11  
TWIST THE  
LEVER 90°  
ANTI-CLOCKWISE  
TO UNLOCK IT

11A



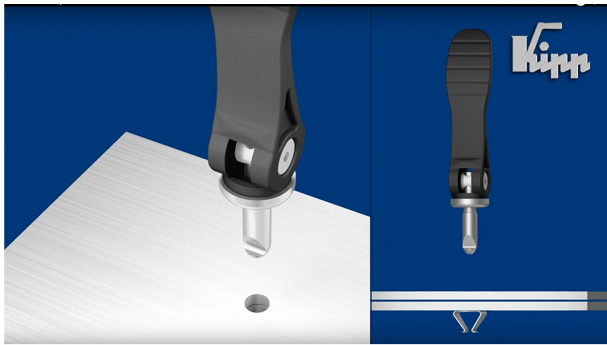
CAM Lever illustration PHASE 2: REMOVAL



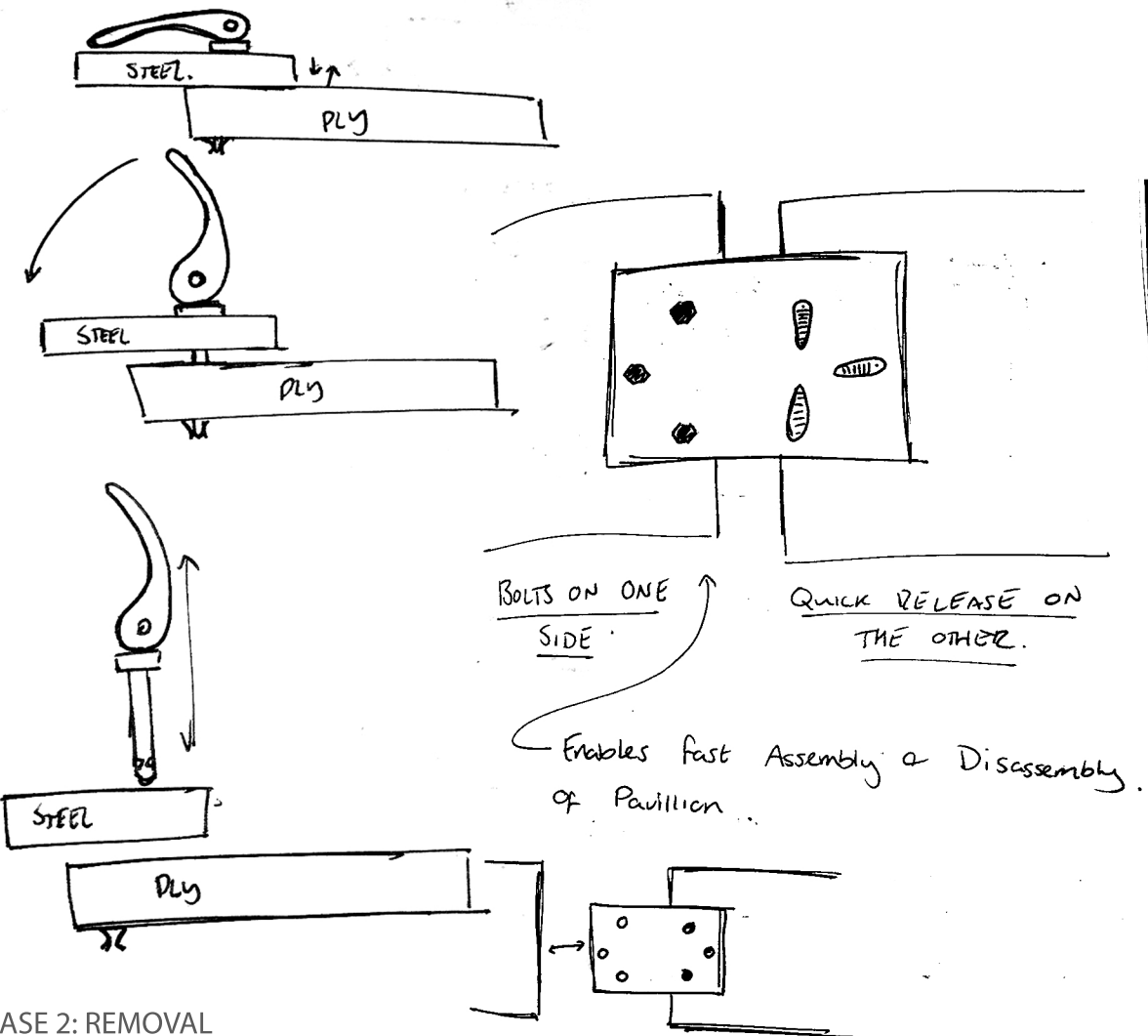
12  
ONCE THE LEVER  
IS FULLY ROTATED,  
IT CAN BE PULLED  
UPWARDS



12A

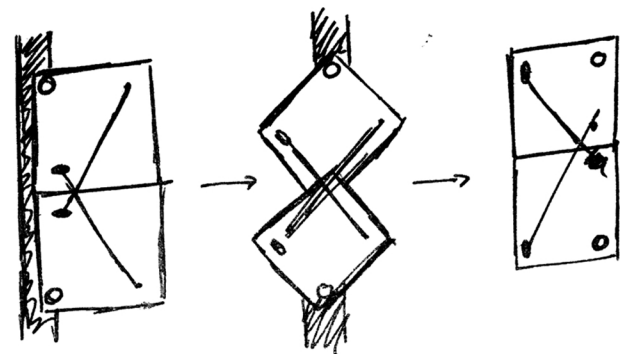


14  
THE COMPONENTS  
ARE NOW  
DIS-ASSEMBLED

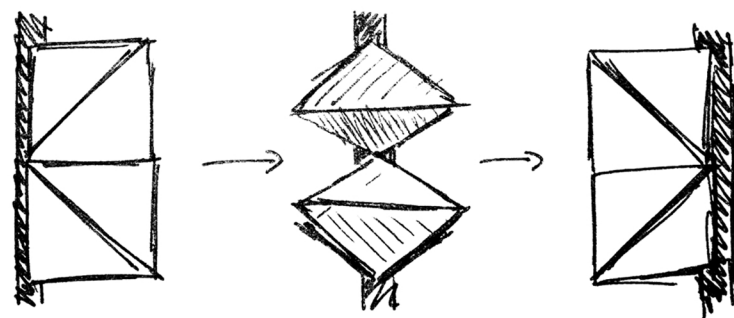




# TORRGLER DOORS

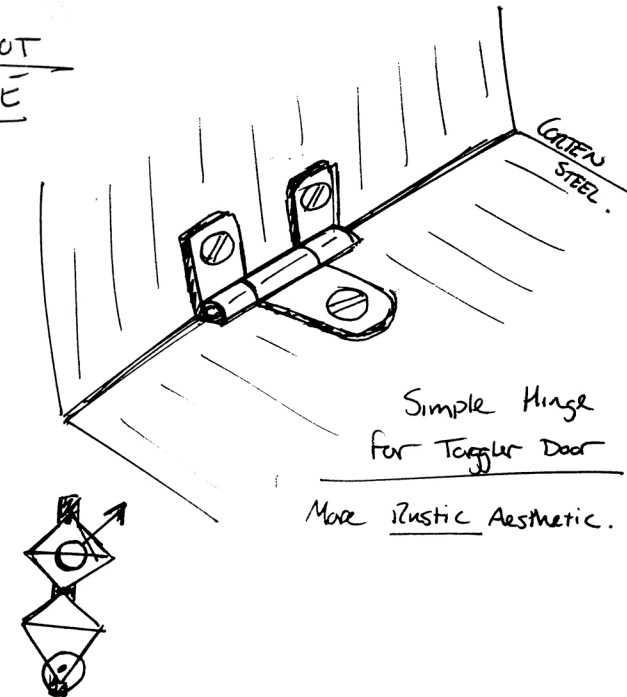
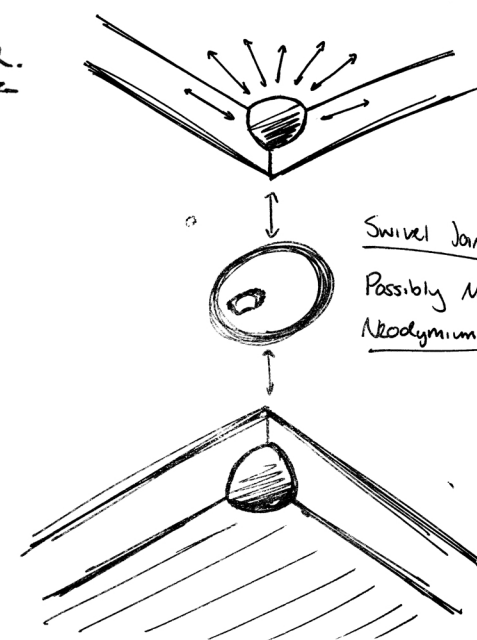
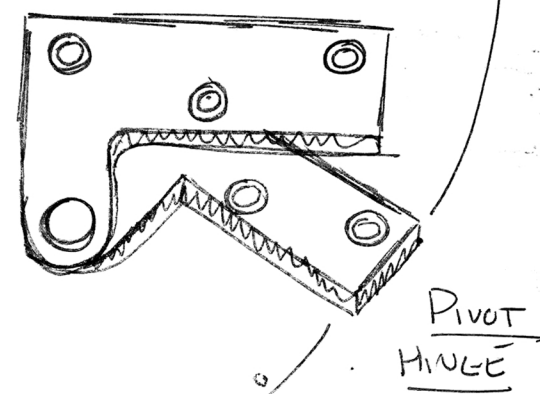
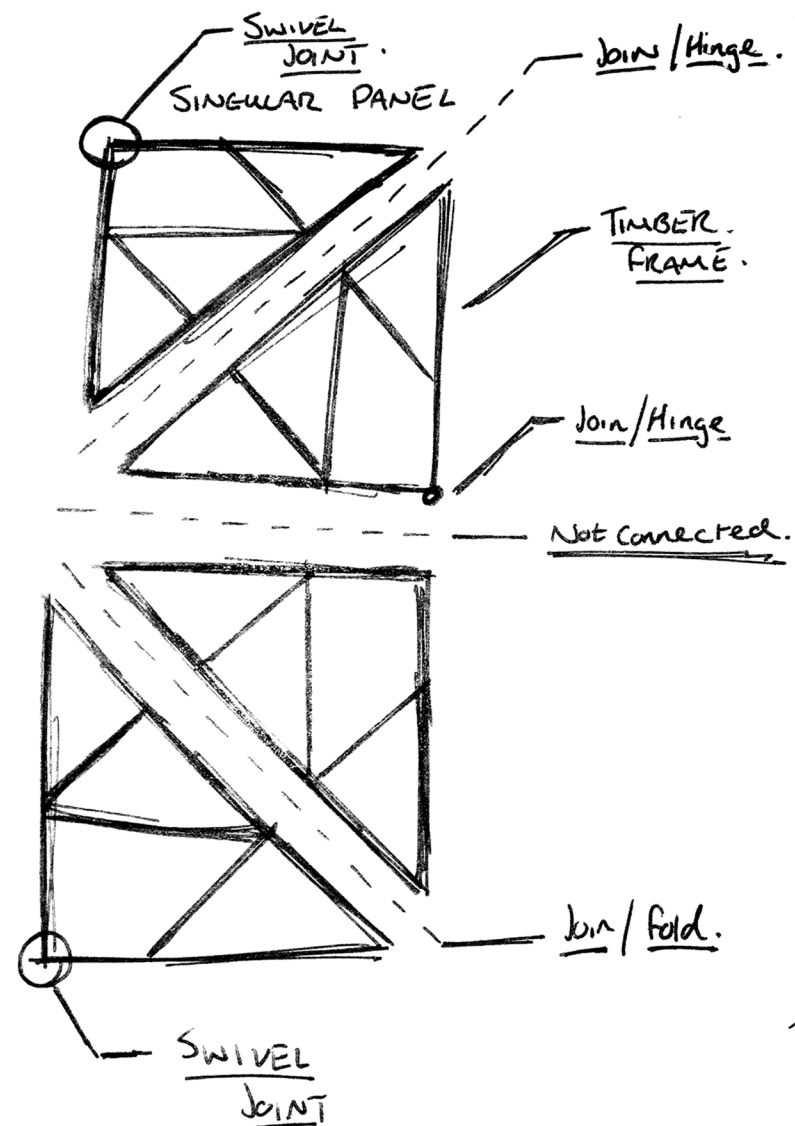


Bespoke doors that can fit into the theme.



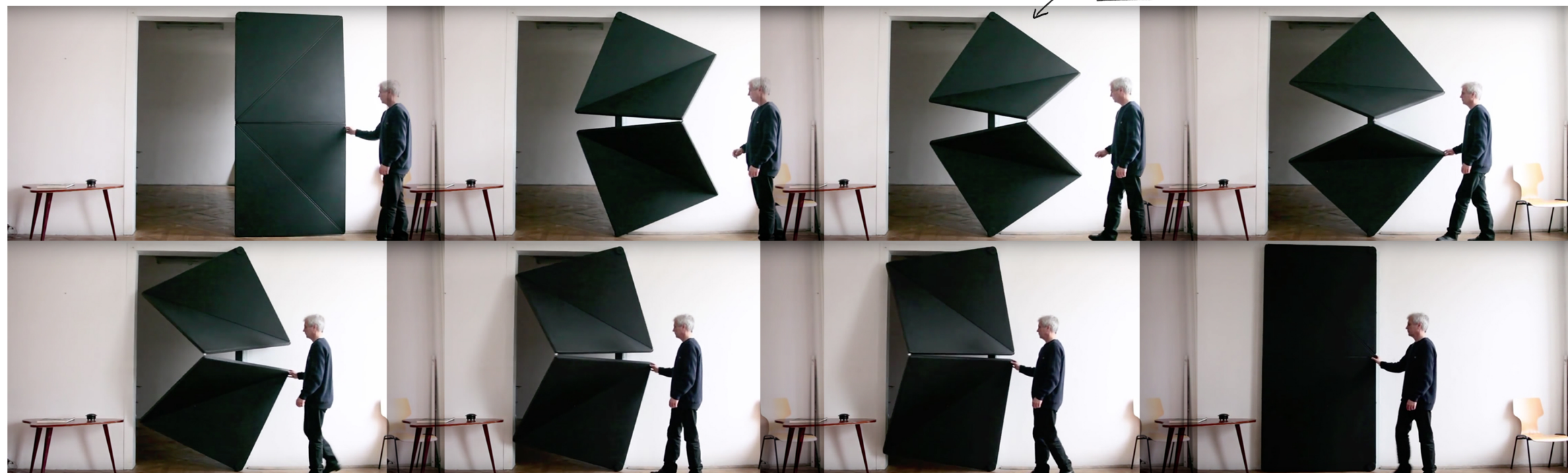
Flow of Movement.

## TORRGLER DOOR CONSTRUCTION.



TRIANGLES FIT WITHIN AESTHETIC OF PAVILLION.

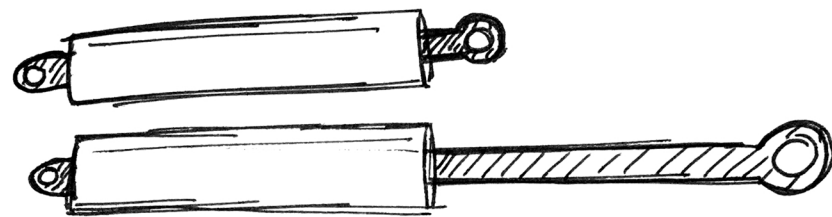
## KINETIC 'TORRGLER' DOORS



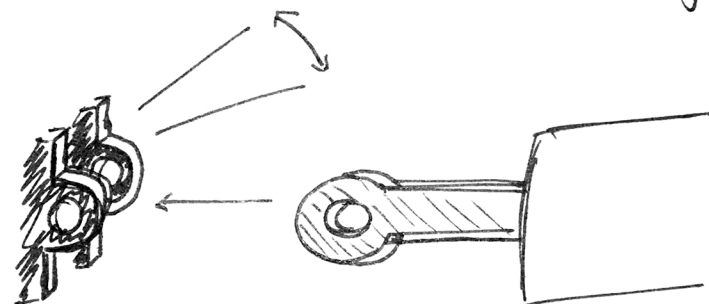




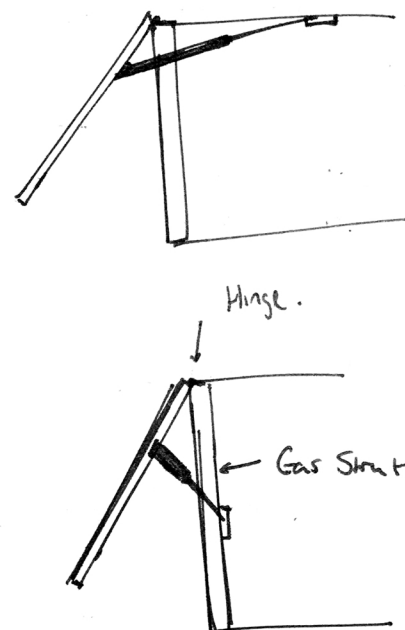
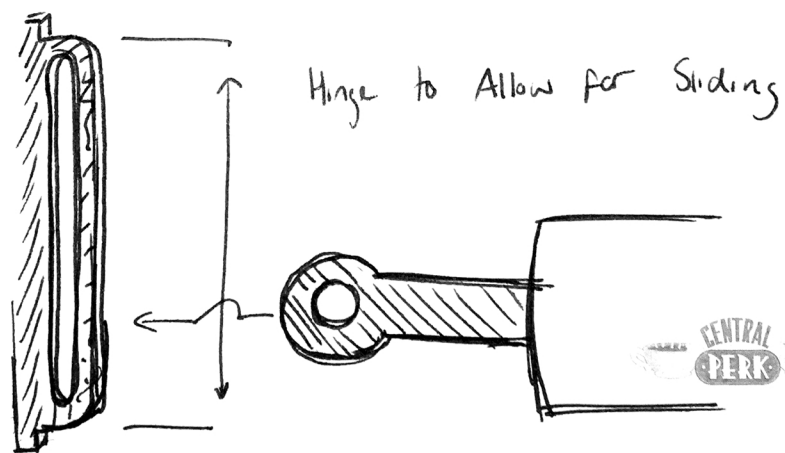
# GAS STRUTS.



Extendable Length.

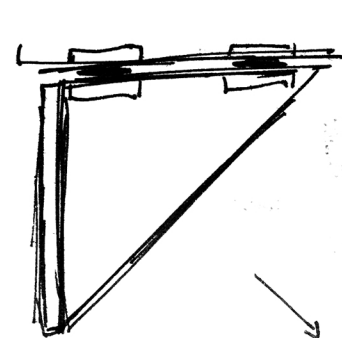


Hinge to Allow for Rotation.



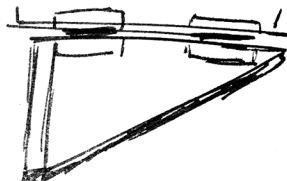
Different Mounting Positions. For Overhead Opening.

## WOODEN PANEL PROPS

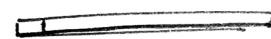


1. PANEL IS VERTICAL. PROP CLIPPED IN AND PARALLEL TO PANEL.

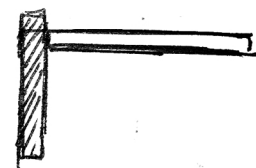
2. START ROTATING PANEL TO HORIZONTAL. PROP REMAINS PARALLEL WITH PANEL.



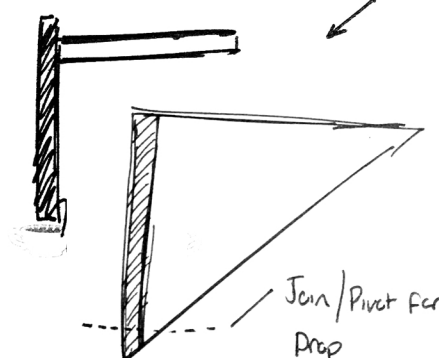
3. PANEL & PROP NOW HORIZONTAL.



4. UNCLIP PROP. IT WILL FALL DOWN FROM THE POINT OF THE TRIANGLE



5. PROP IS VERTICAL. SUPPORTING RAISED PANEL.





**fruit  
market**  
HULL

**fruit  
market**  
HULL

**fruit  
market**  
HULL

**fruit  
market**  
HULL

**fruit  
market**  
HULL

**fruit  
market**  
HULL

**fruit  
market**  
HULL

**fruit  
market**  
HULL

**fruit  
market**  
HULL























