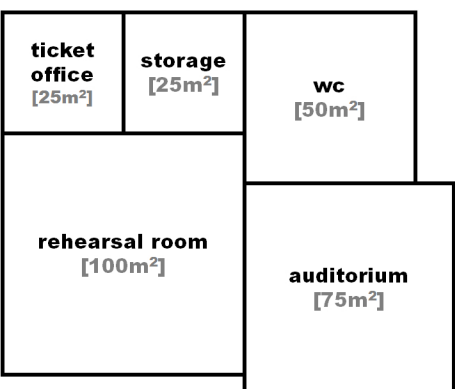
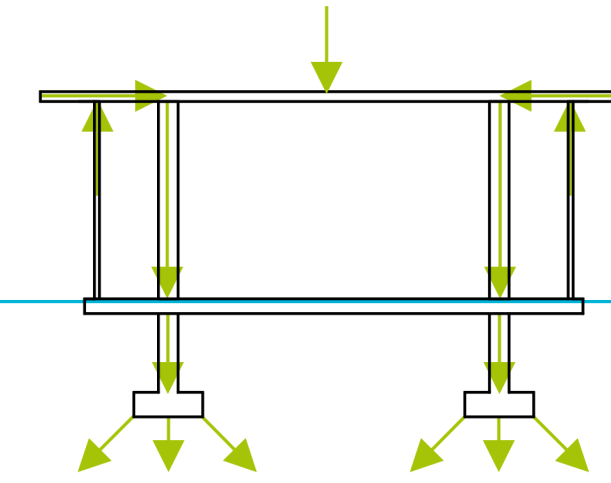
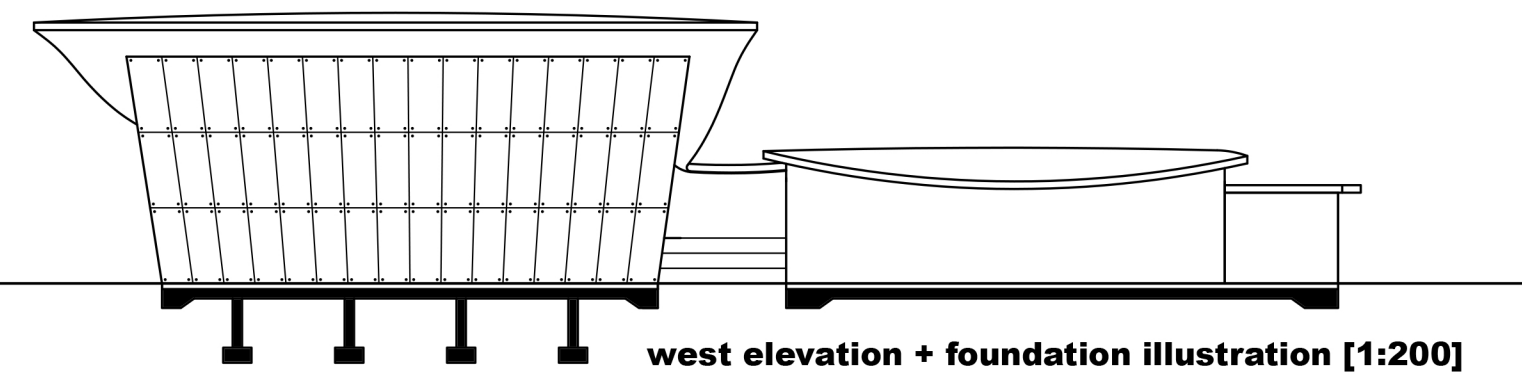
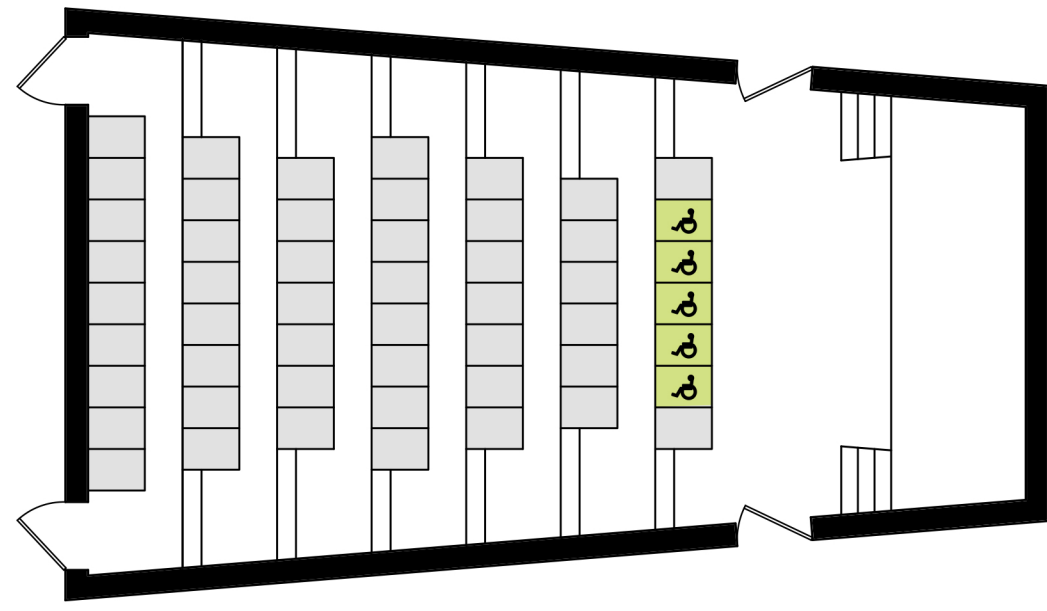
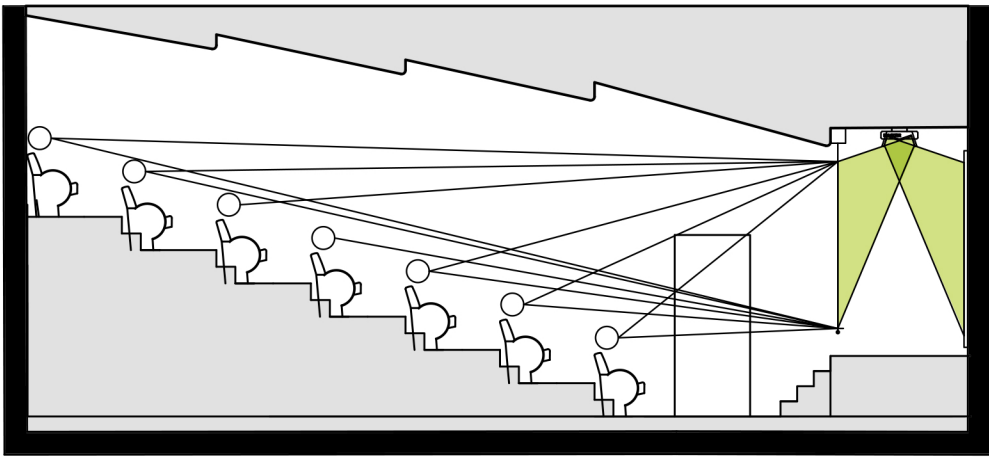


experiments with differently shaped theatres for maximum seats. Both auditoriums are 75m². The trapezoid auditorium can seat an extra 6 people when compared to the rectangular one

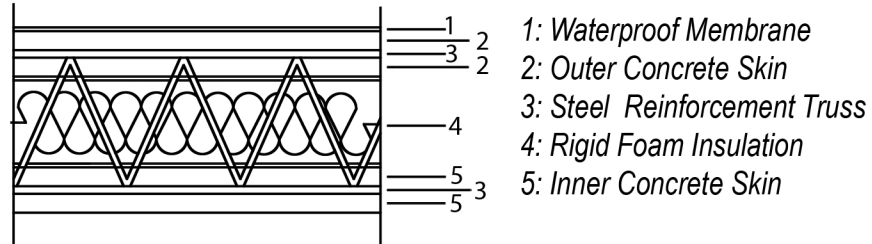
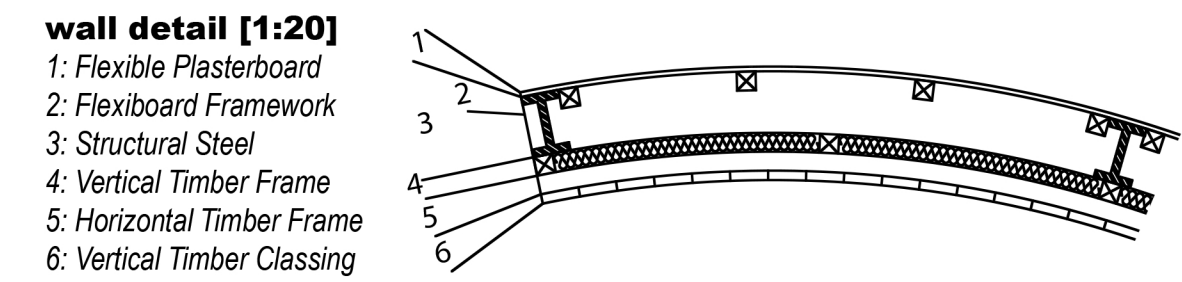


auditorium
The auditorium in this building is designed for presentations, small speeches, community classes and also doubles as an indie movie theatre. To accommodate these functions there are two screens in the auditorium, in front and behind the stage. There is a short throw projector mounted on a rotatable plate that can project onto either screen. The front one for movies, the rear one for presentations. The auditoria's seating is designed so that one can see the top and bottom of the front screen no matter where they are sat. this also ensures that at any seat a speaker will be clearly visible and audible. The auditoria's roof has been shaped to breakup the roof surface and reduce echo, and there are noise reduction panels along the left and right walls. The auditorium is also wheelchair accessible - with 5 designated chairs reserved for up to 3 wheelchair users to sit in front of.

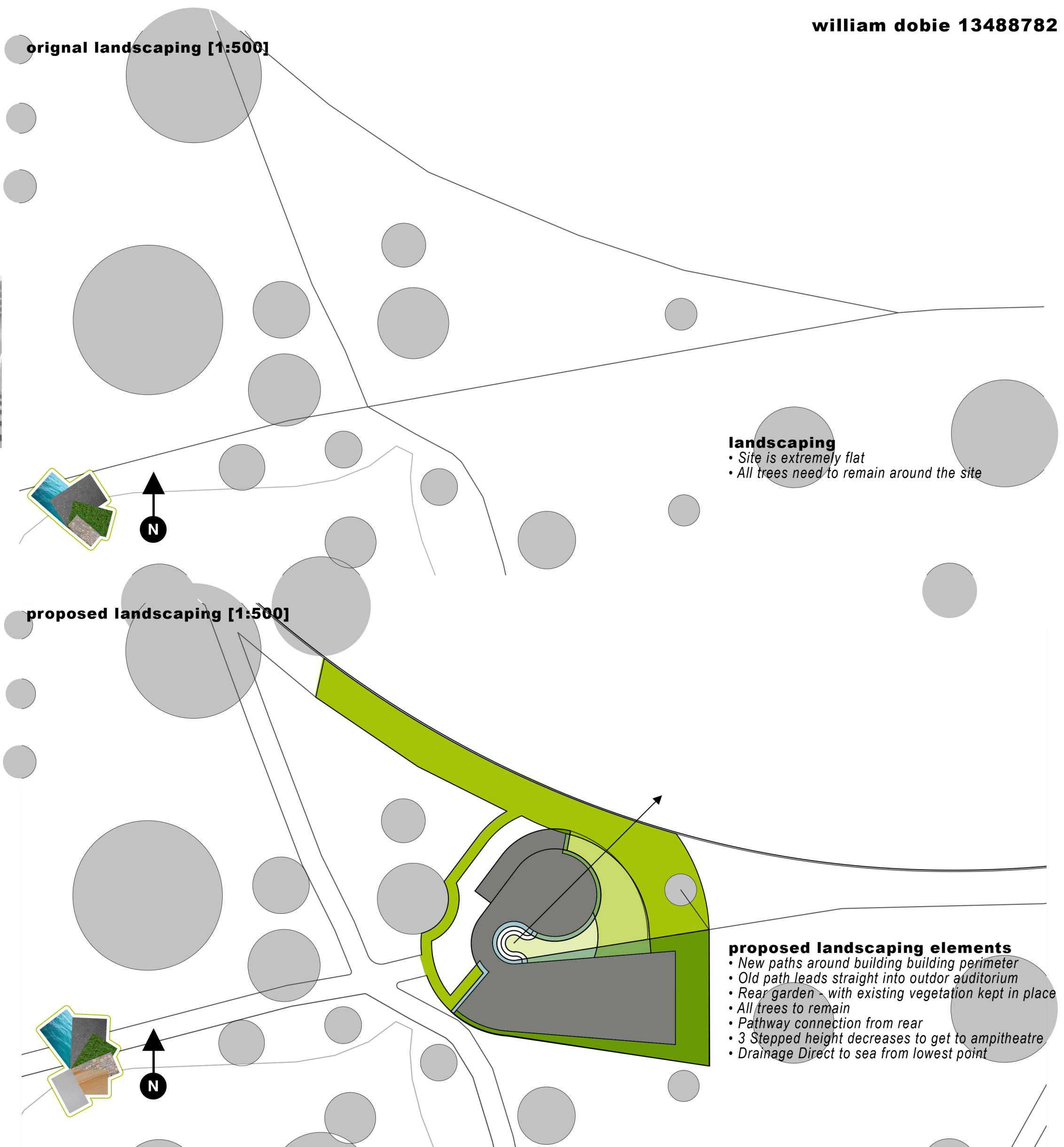


structural explanation
The outer most, glazed curtain walls are not structural. The loads are transferred to the formed concrete roof which is cantilevered over the North, East and South sides. The roof transfers it's load to the steel column structural walls of the auditorium below and to two columns in the lobby. From here the load of the building is tranfered into a concrete isolated spread footings foundation under the auditorium - with a more lightweight raft foundation underneath the walkways and rehearsal room as shown in the drawing above..

roof detail [1:10]
Concrete was chosen for the roof material for two reasons, despite not being the most sustainable. Concrete acts as a thermal mass which will be essential in keeping the building passively cooled. It is also structurally appropriate for the cantilevers and shapes that are so prominent in the roof design.



original landscaping [1:500]



proposed landscaping [1:500]

