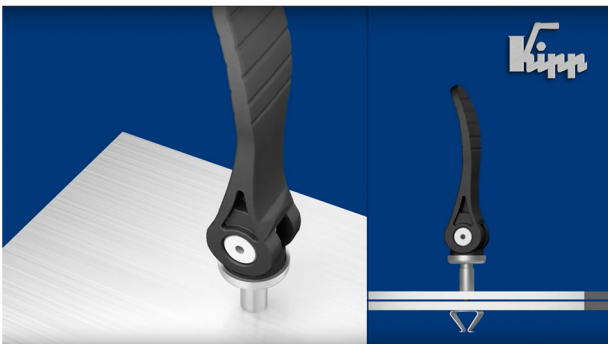
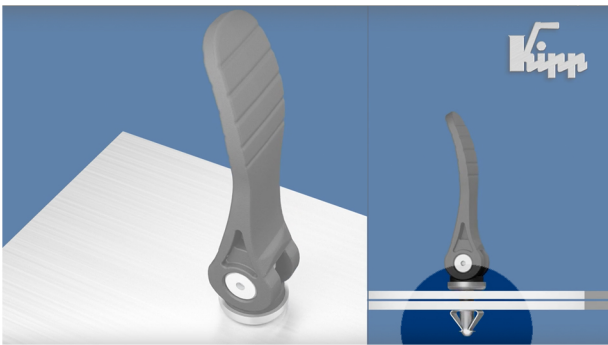


1
CAM LEVER AND
JOINING PARTS
ALL SEPARATED.



2
LOWER CAM
LEVER INTO PLACE



3
PUSH DOWN TO
LOCK THE LEVER
IN PLACE



4
PUSH LEVER
TOWARDS
LATERAL
POSITION.



5
THE LEVER WILL
CLAMP THE PARTS
TOGETHER AS IT
MOVES FURTHER
TOWARDS THE
LOCKING POINT



6
CAM LEVER WILL
LOCK INTO PLACE
WHEN LATERAL,
LOCKING THE
PARTS IN PLACE

CAM Lever illustration PHASE 1: INSTERTION

7
LIFT THE LEVER
FROM THE
LATERAL
POSITION.

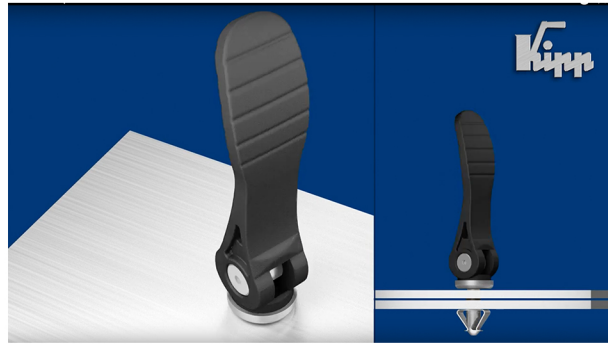
8
FLIP THE LEVER UP,
THIS WILL SLOWLY
START TO UNLOCK
THE COMPONENTS

9
AS THE LEVER
REACHES
VERTICAL, THERE
WILL BE A SMALL
AMOUNT OF
RESISTANCE

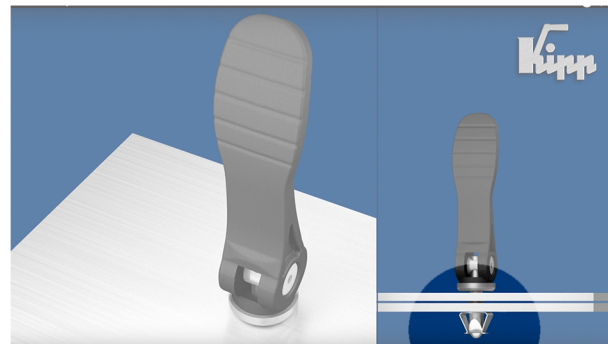
5
THE LEVER IS NOW
VERTICAL. THE
COMPONENTS
WILL NOW BE
LOOSE.

11
TWIST THE
LEVER 90°
ANTI-CLOCKWISE
TO UNLOCK IT

11A



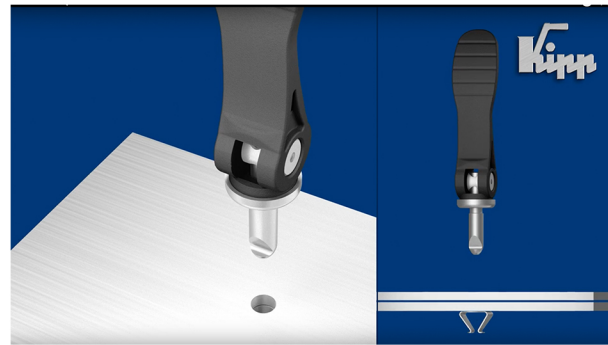
CAM Lever illustration PHASE 2: REMOVAL



12
ONCE THE LEVER
IS FULLY ROTATED,
IT CAN BE PULLED
UPWARDS



12A



14
THE COMPONENTS
ARE NOW
DIS-ASSEMBLED

